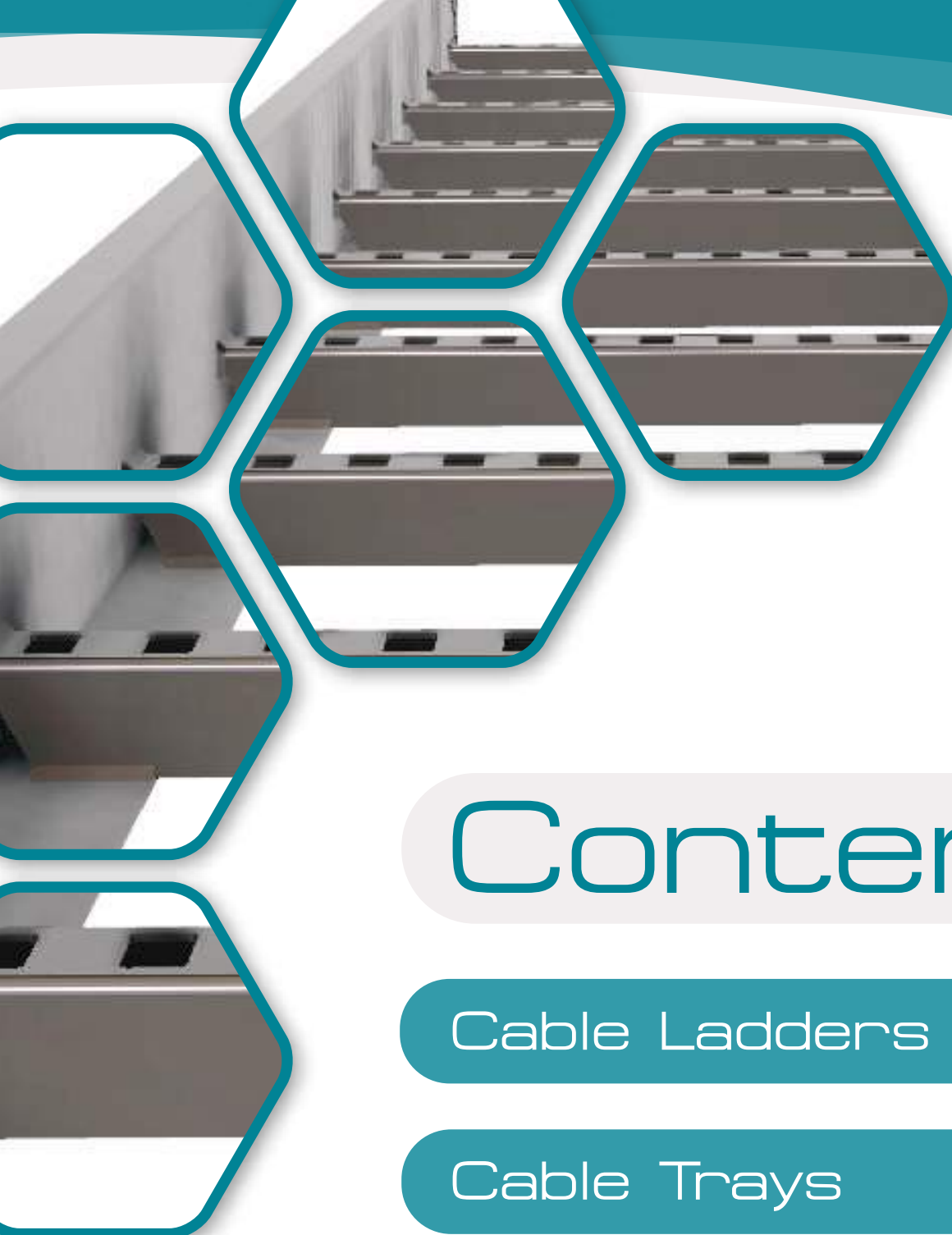




PETRO STRUT
SOUTH AFRICA

Product Catalogue



Contents

Cable Ladders

02

Cable Trays

07

Wire Mesh Trays

14

Cable Trunking

18

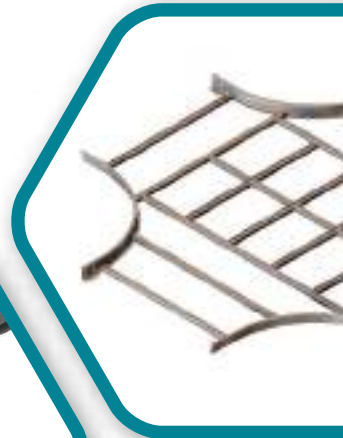
Metal Framing

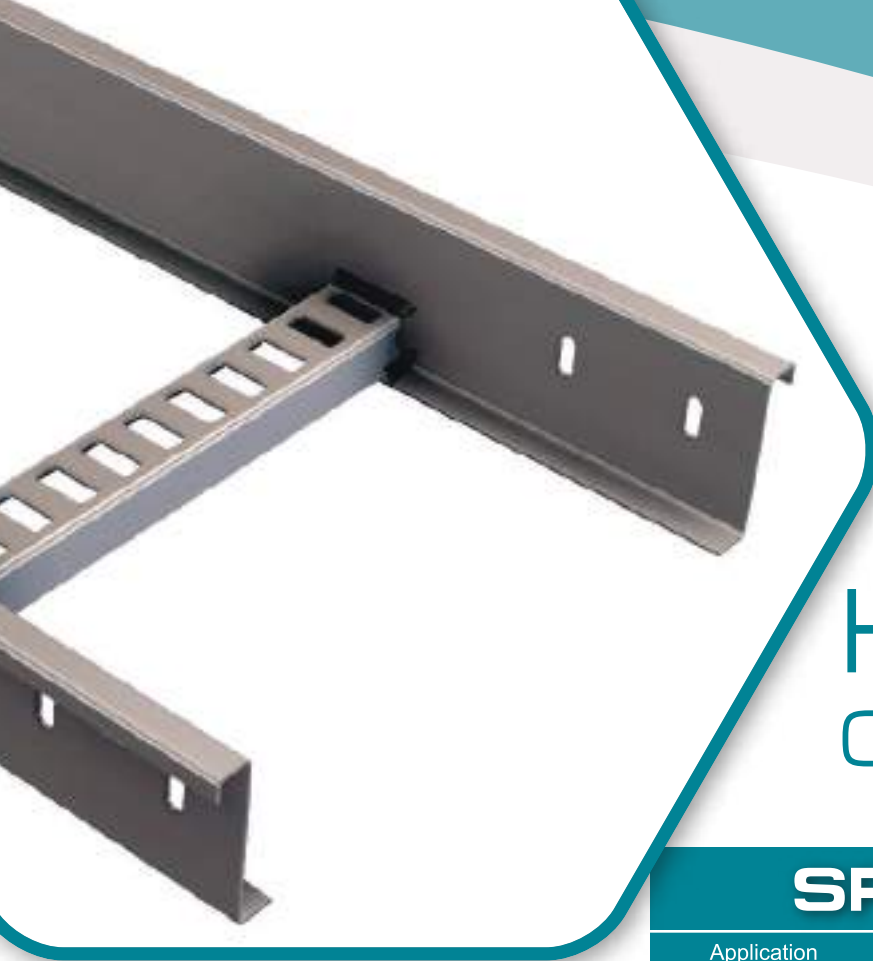
22

Cable Ladders

Cable Ladders are manufactured from sheet metal, forming a ladder type support with side rails and evenly spaced slotted cross rungs allowing the freedom of cable entry and exit and the ability to secure cables to the ladder by using cable clamps or strapping, ensuring a flexible yet safe installation.

Our Cable Ladder and Accessory range allow for easy installation on site with economical solutions for light duty, medium duty and heavy duty horizontal or edge mount applications.





HM76

Cable Ladder

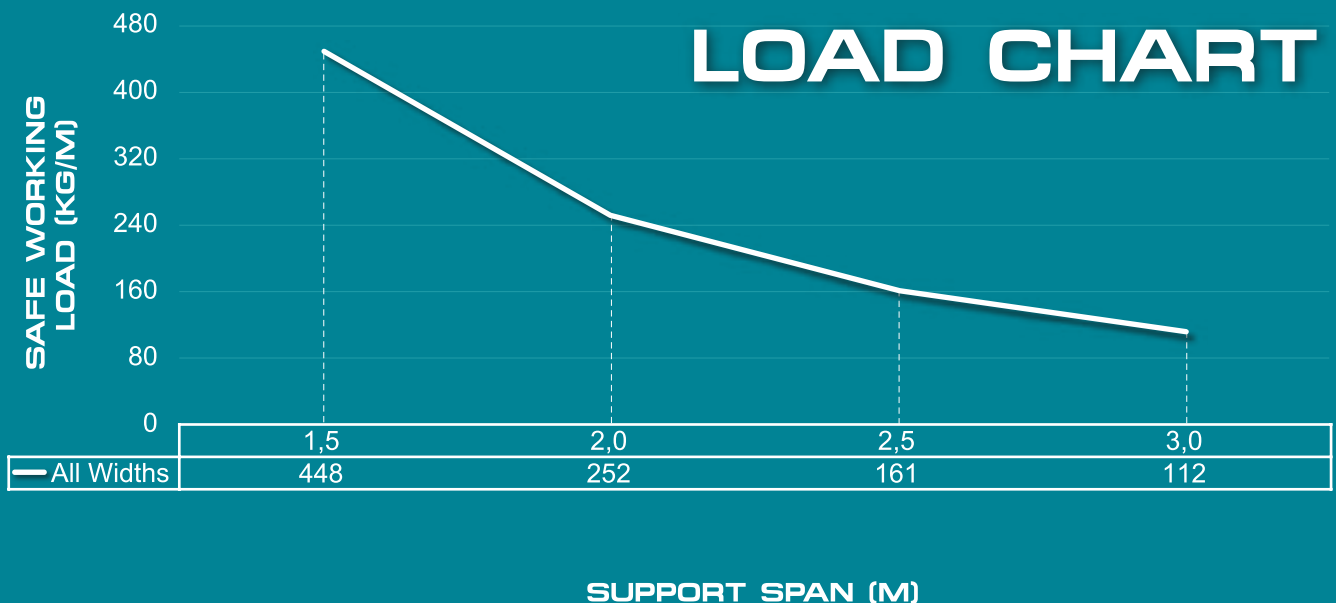
SPECIFICATIONS

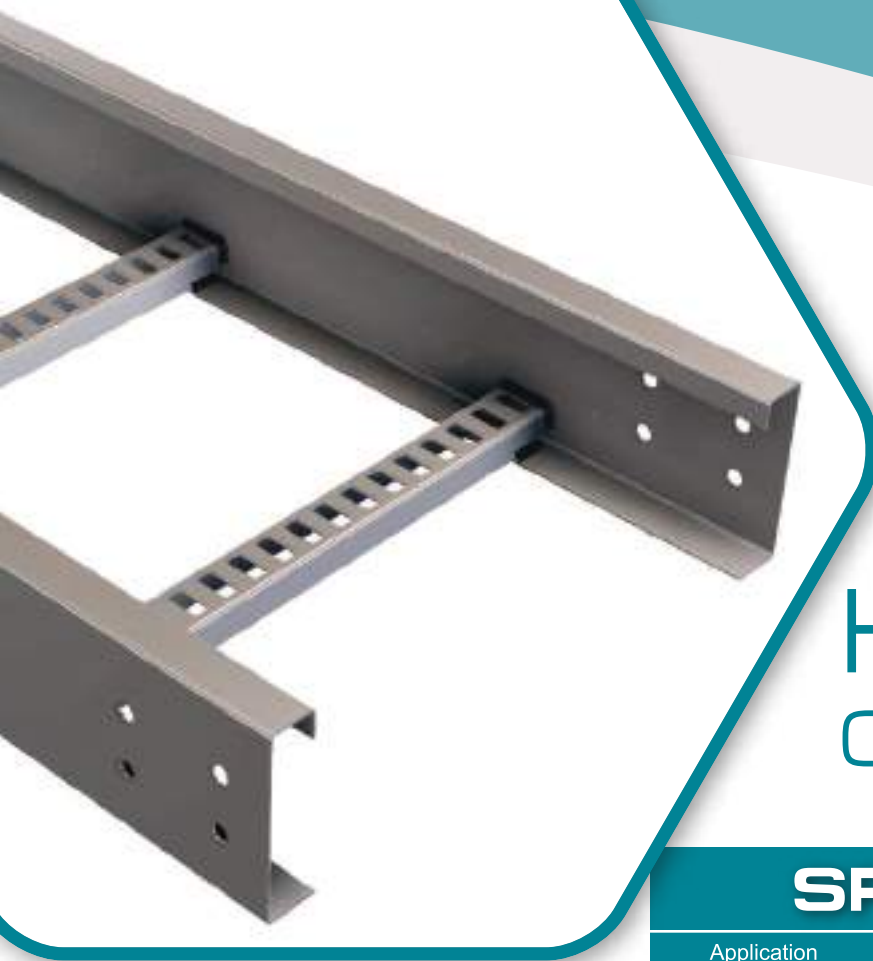
| | |
|-----------------------|---|
| Application | Horizontally Mounted installation |
| Material ¹ | Mild Steel [Hot Dip Galvanized] |
| Thickness | 1.6mm |
| Side Rail Height | 76mm |
| Rung Spacing | 375mm |
| Loading Depth | 49mm |
| Standard Length | 3.0m |
| Available Width | 100 150 200 300 400 500 600 700 800 1 000mm |
| Available Accessories | Hor Int Ext Tee 4-Way Covers |
| Bend Radius | 450mm |

¹ Stainless Steel 304 & 316 - available on request

The data below is typical, based on results under test conditions & should be used as a guide only.

LOAD CHART





HM20B

Cable Ladder

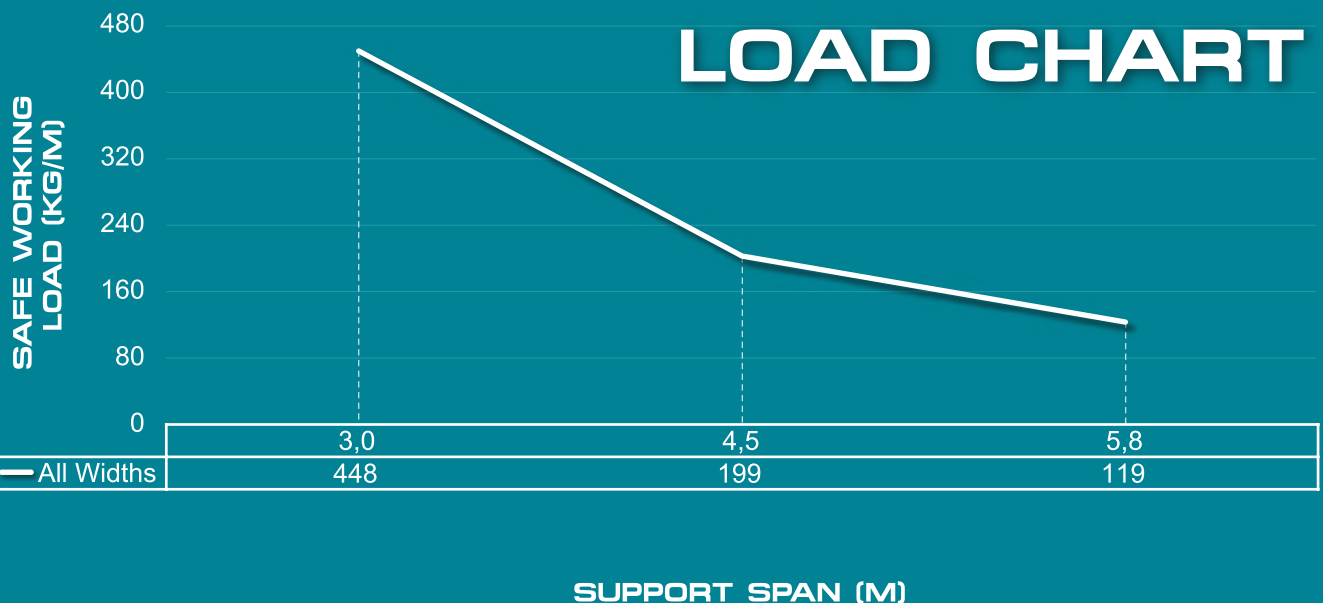
SPECIFICATIONS

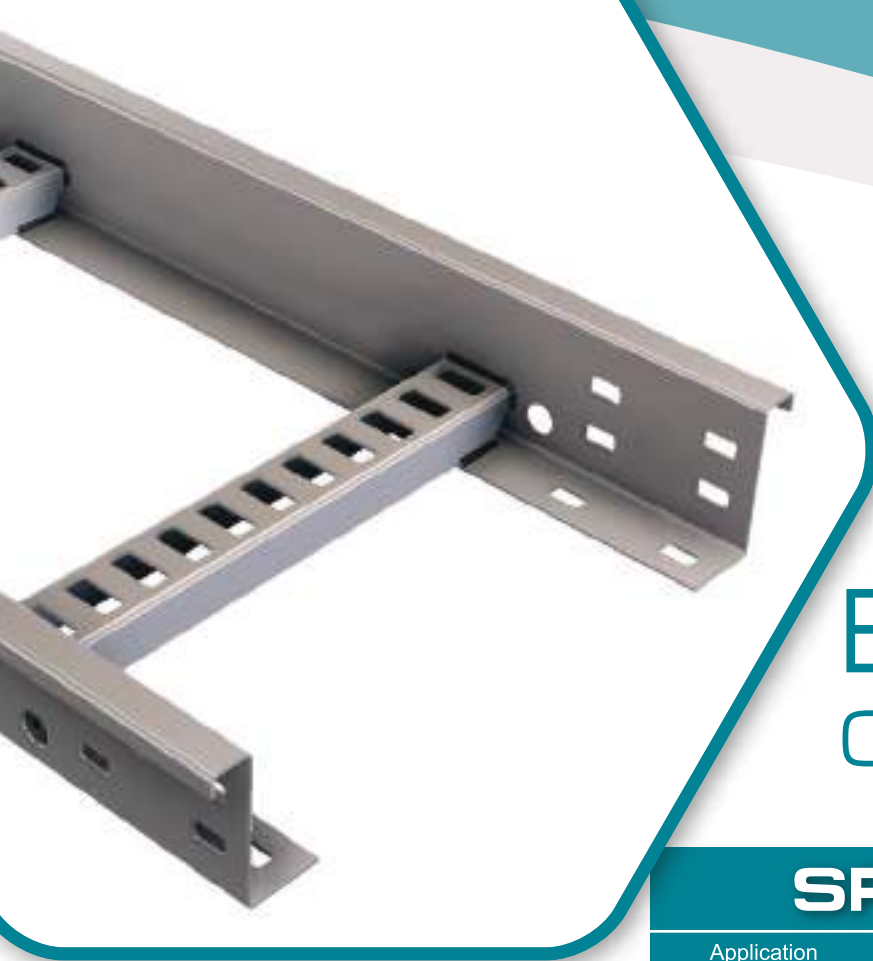
| | |
|--------------------------|---|
| Application | Horizontally Mounted installation |
| Material ¹ | Structural Steel [Hot Dip Galvanized] |
| Thickness | 1.5mm |
| Side Rail Height | 130mm |
| Rung Spacing | 300mm |
| Loading Depth | 103mm |
| Standard Length | 5.8m |
| Available Width | 150 200 300 400 500 600 800 1 000mm |
| Available Accessories | Hor Int Ext Tee 4-Way Covers |
| Bend Radius ² | 650mm |

¹ Stainless Steel 304 & 316 - available on request

² 1000mm - available on request

The data below is typical, based on results under test conditions & should be used as a guide only.





EM75

Cable Ladder

SPECIFICATIONS

| | |
|--------------------------|---|
| Application | Edge Mounted installation |
| Material ¹ | Mild Steel [Hot Dip Galvanized] |
| Thickness | 2.0mm |
| Side Rail Height | 75mm |
| Rung Spacing | 300mm |
| Loading Depth | 48mm |
| Standard Length | 3.0m |
| Available Width | 150 200 300 400 500 600 800 1 000mm |
| Available Accessories | Hor Int Ext Tee 4-Way Covers |
| Bend Radius ² | 450mm |

¹ Stainless Steel 304 & 316 - available on request

² 650 & 1000mm - available on request

The data below is typical, based on results under test conditions & should be used as a guide only.

SAFE WORKING
LOAD (KG/M)

LOAD CHART

| | 1,5 | 2,0 | 2,5 | 3,0 |
|---------|-----|-----|-----|-----|
| 150mm | 100 | 72 | 60 | 50 |
| 400mm | 205 | 152 | 120 | 100 |
| 1 000mm | 300 | 220 | 180 | 150 |

SUPPORT SPAN (M)

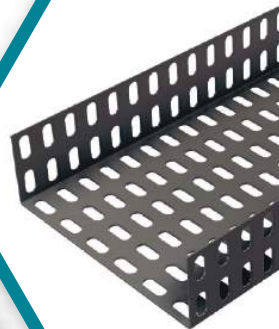
Cable Ladder Accessories



Cable Trays

Cable Trays are manufactured from sheet metal, forming a U-shape channel type support with slotted perforations allowing for a well-ventilated installation.

Our Cable Tray and Accessory range allow for easy installation on site with economical solutions for light duty, medium duty and heavy duty horizontal or vertical mount applications.





LD 19 Cable Tray

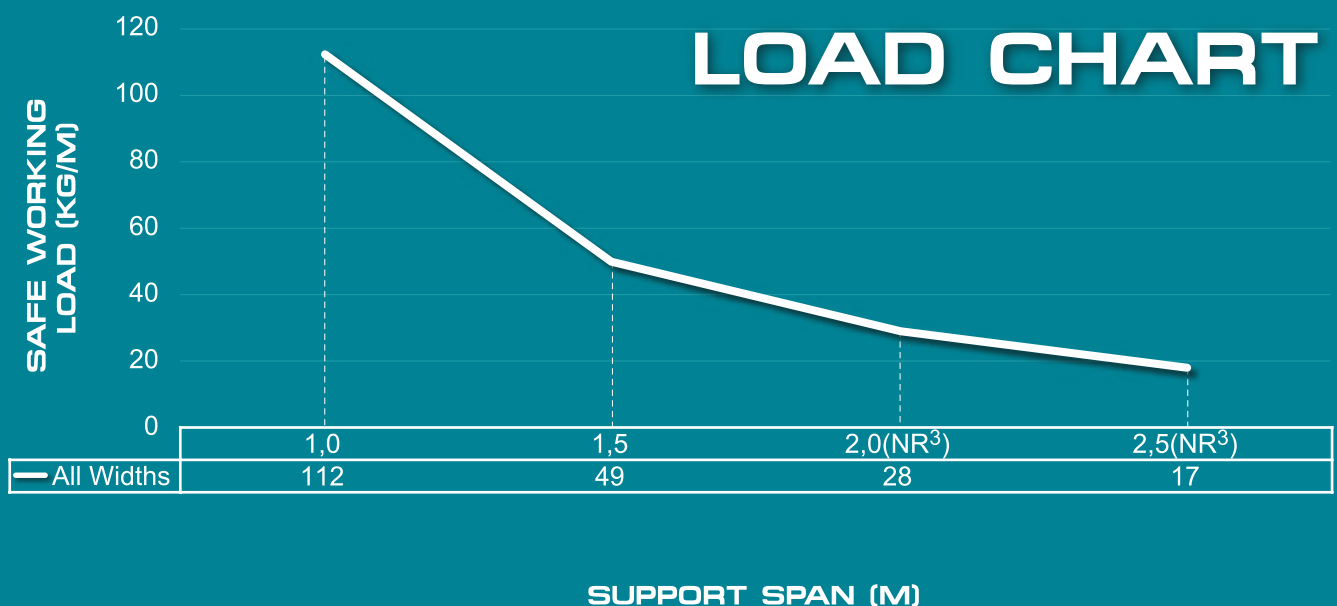
SPECIFICATIONS

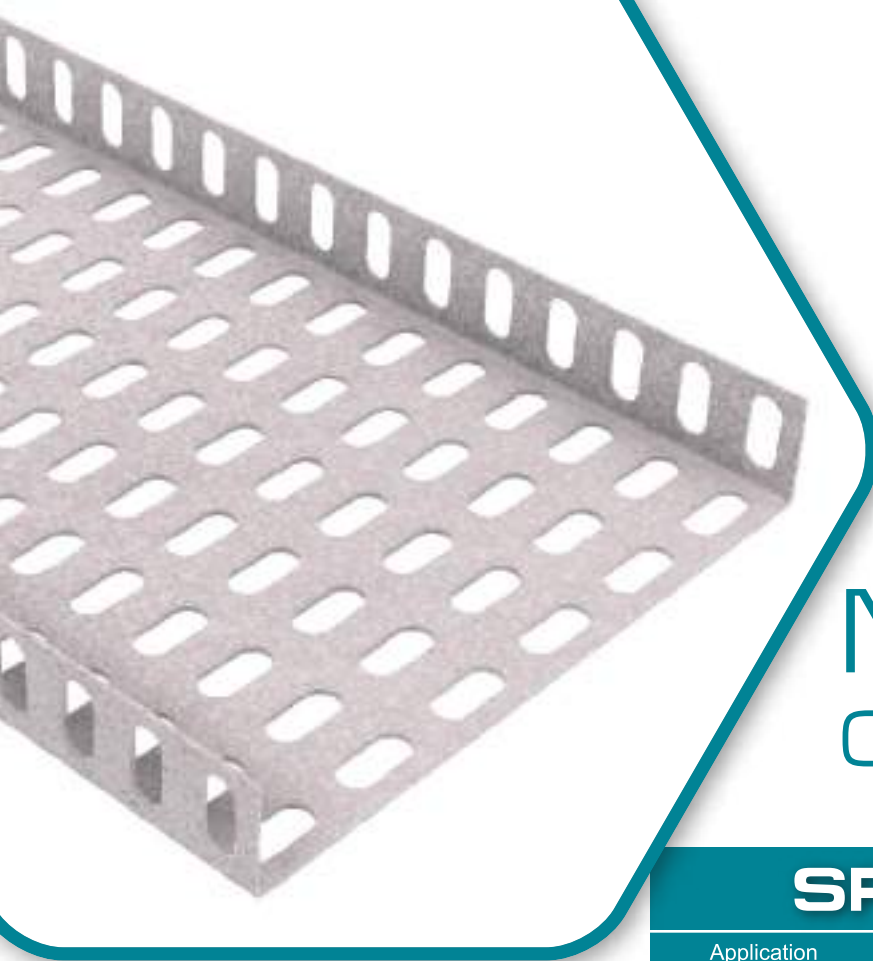
| | |
|-----------------------|--|
| Application | Horizontally & Vertically Mounted installation |
| Material | Pre-Galvanized Steel |
| Thickness | 0.8mm [50-101 wide] 1.0mm [152-304 wide] |
| Side Height | 12mm [50-76 wide] 19mm [101-304 wide] |
| Standard Length | 3.0m |
| Available Width | 50 76 101 152 203 228 304mm |
| Available Accessories | Hor Int Ext Tee 4-Way |
| Bend Radius | 110mm |

The data below is typical, based on results under test conditions & should be used as a guide only.

³This support span is not recommended.

LOAD CHART





MD38 Cable Tray

SPECIFICATIONS

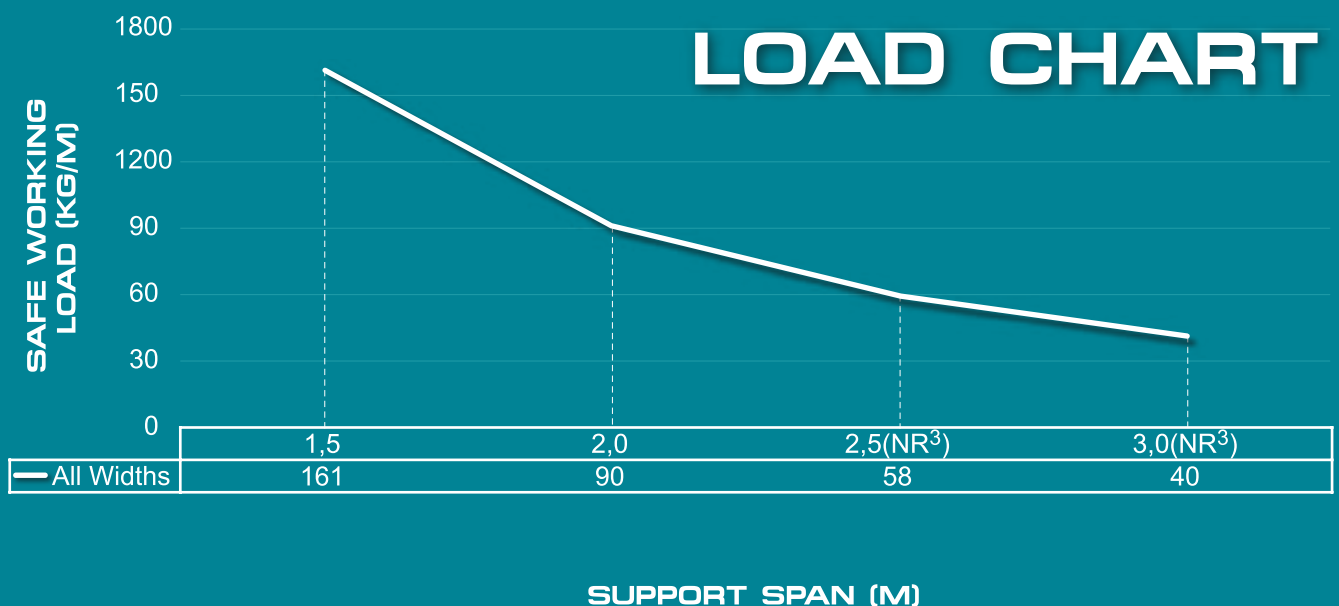
| | |
|-----------------------|--|
| Application | Horizontally & Vertically Mounted installation |
| Material ¹ | Mild Steel [Hot Dip Galvanized] |
| Thickness | 1.6mm |
| Side Height | 38mm |
| Standard Length | 3.0m |
| Available Width | 76 114 152 228 304mm |
| Available Accessories | Hor Int Ext Tee 4-Way Covers |
| Bend Radius | 400mm |

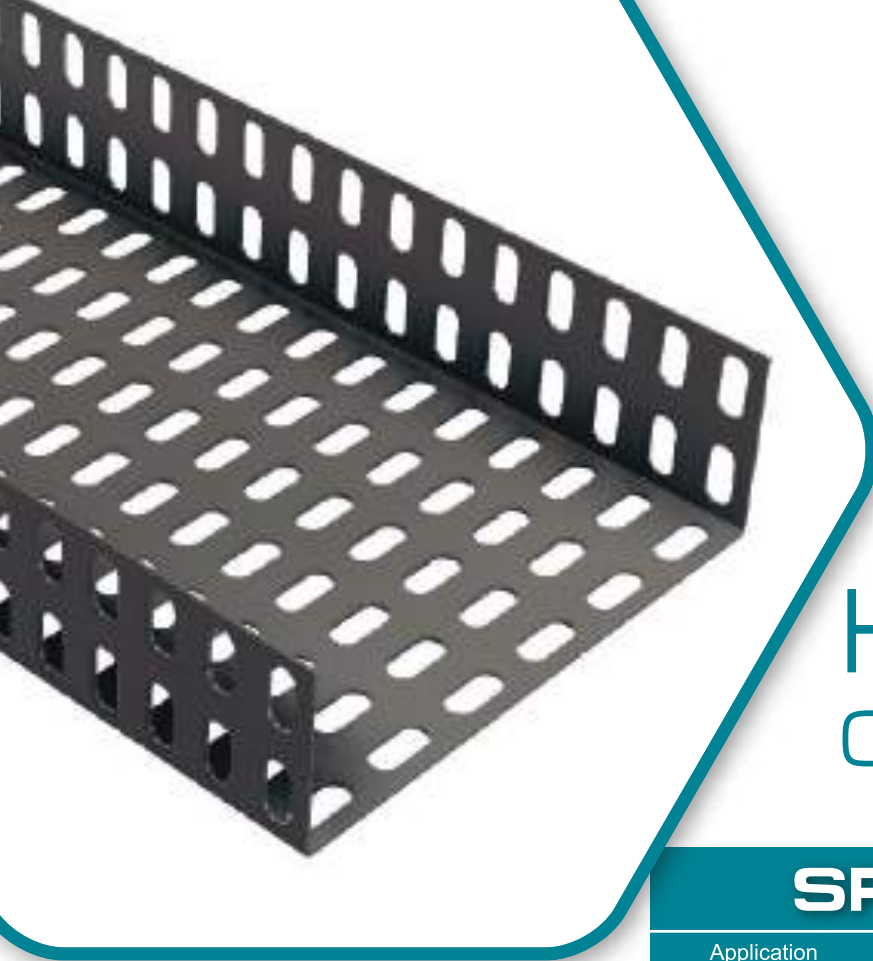
¹ Stainless Steel 304 & 316 - available on request

The data below is typical, based on results under test conditions & should be used as a guide only.

³This support span is not recommended.

LOAD CHART





HD76 Cable Tray

SPECIFICATIONS

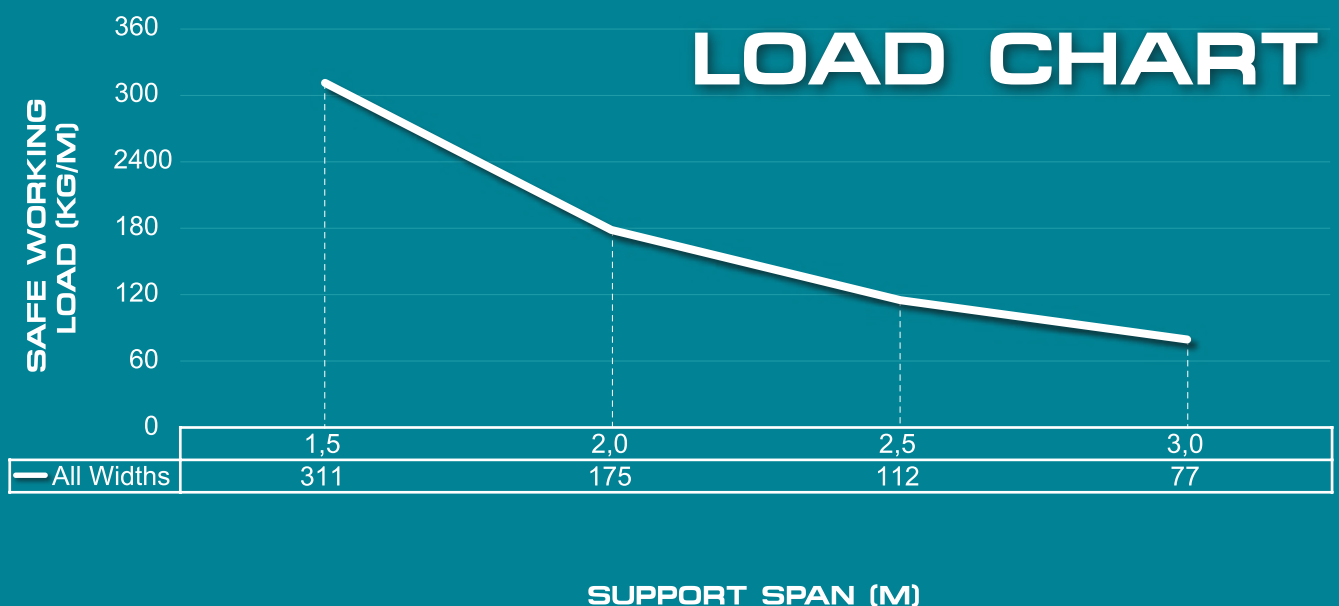
| | |
|-----------------------|--|
| Application | Horizontally & Vertically Mounted installation |
| Material ¹ | Mild Steel [Hot Dip Galvanized] |
| Thickness | 1.6mm [76-304 wide] 2.0mm [457-609 wide] |
| Side Height | 76mm |
| Standard Length | 3.0m |
| Available Width | 76 114 152 228 304 457 609mm |
| Available Accessories | Hor Int Ext Tee 4-Way Covers |
| Bend Radius | 400mm |

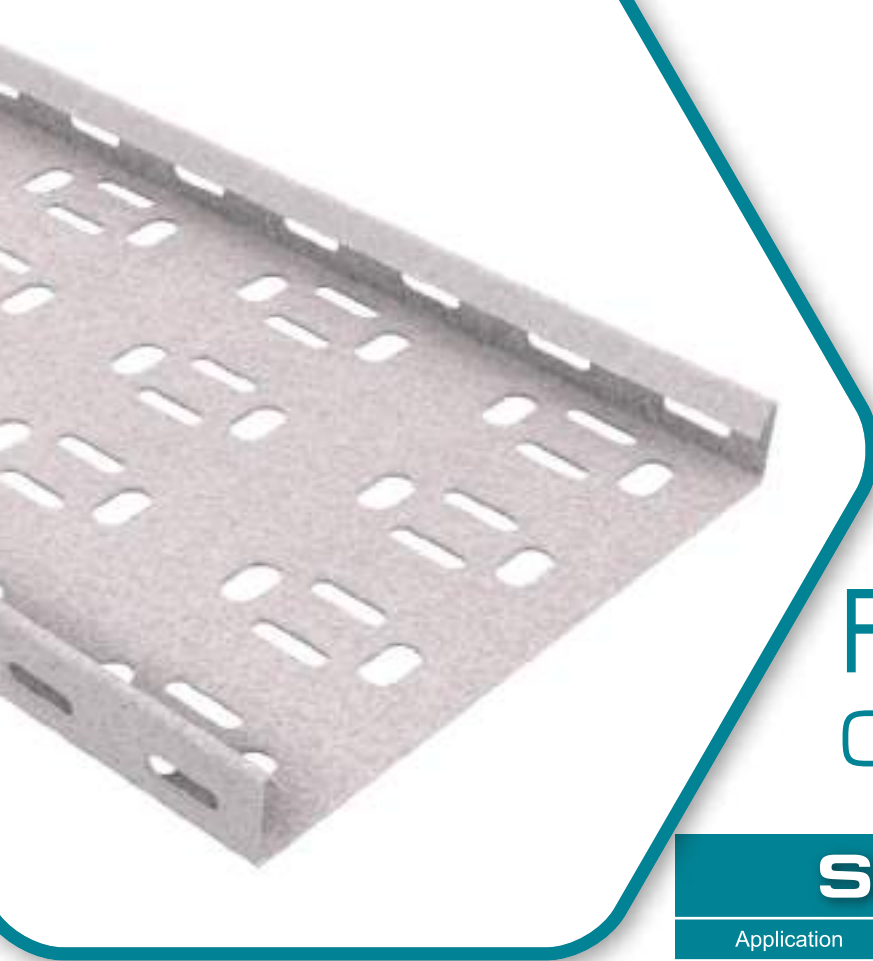
¹ Stainless Steel 304 & 316 - available on request

The data below is typical, based on results under test conditions & should be used as a guide only.

³This support span is not recommended.

LOAD CHART





RF30 Cable Tray

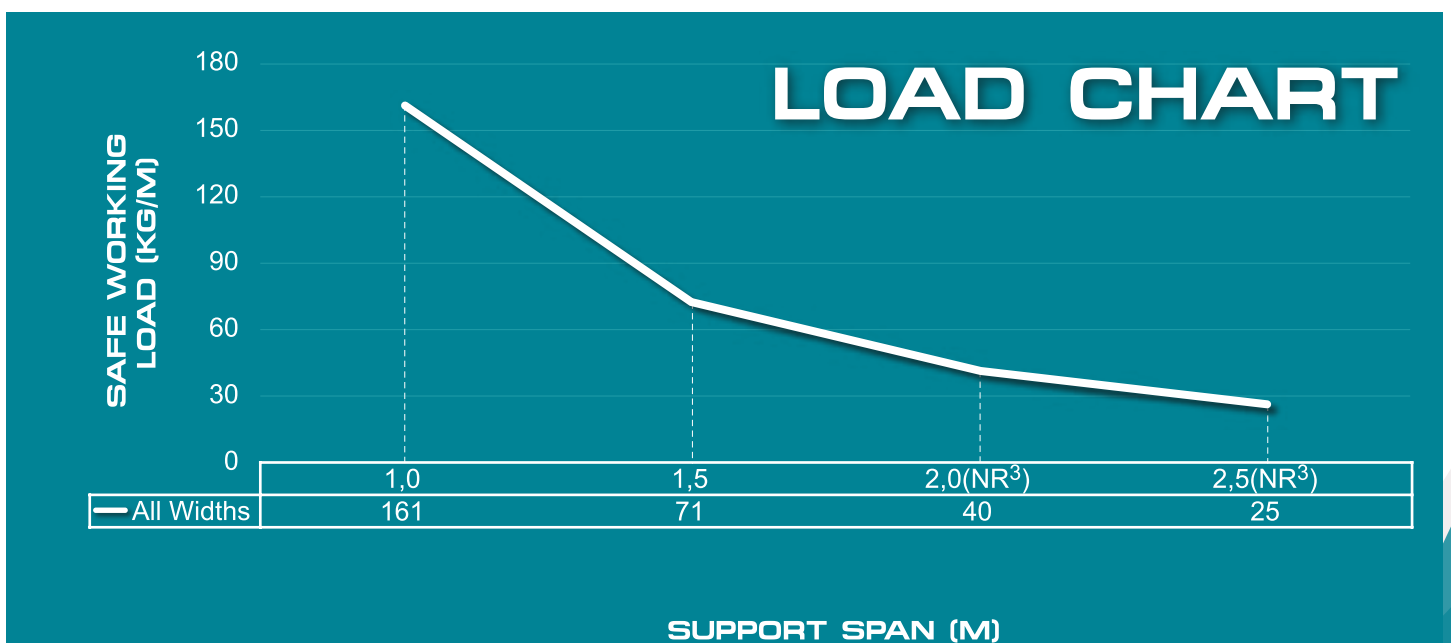
SPECIFICATIONS

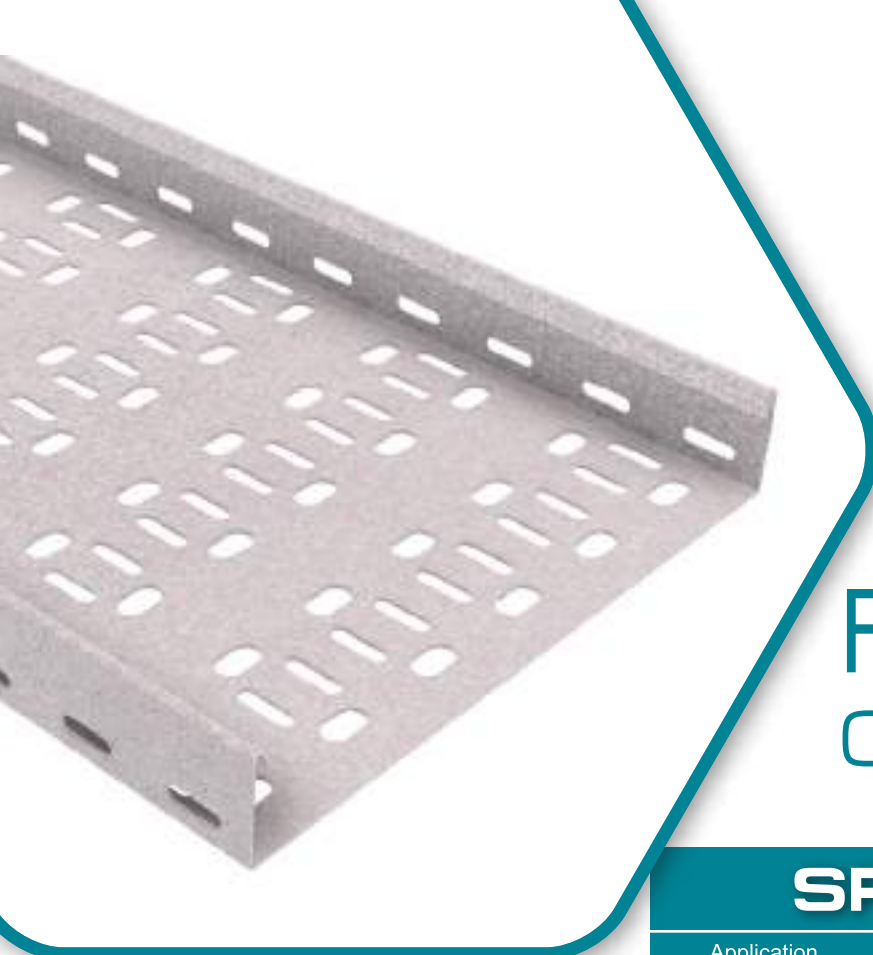
| | |
|-----------------------|---|
| Application | Horizontally & Vertically Mounted installation |
| Material ¹ | Pre-Galvanized Steel |
| Thickness | 1.0mm [50-225 wide] 1.2mm [300 wide] 1.6mm [450-900 wide] |
| Side Height | 27mm |
| Standard Length | 3.0m |
| Available Width | 50 75 100 150 225 300 450 600 750 900mm |
| Available Accessories | Hor Int Ext Tee 4-Way Covers |

¹ Mild Steel [Hot Dip Galvanized] – External Lip
- available on request

The data below is typical, based on results under test conditions & should be used as a guide only.

³This support span is not recommended.





RF50 Cable Tray

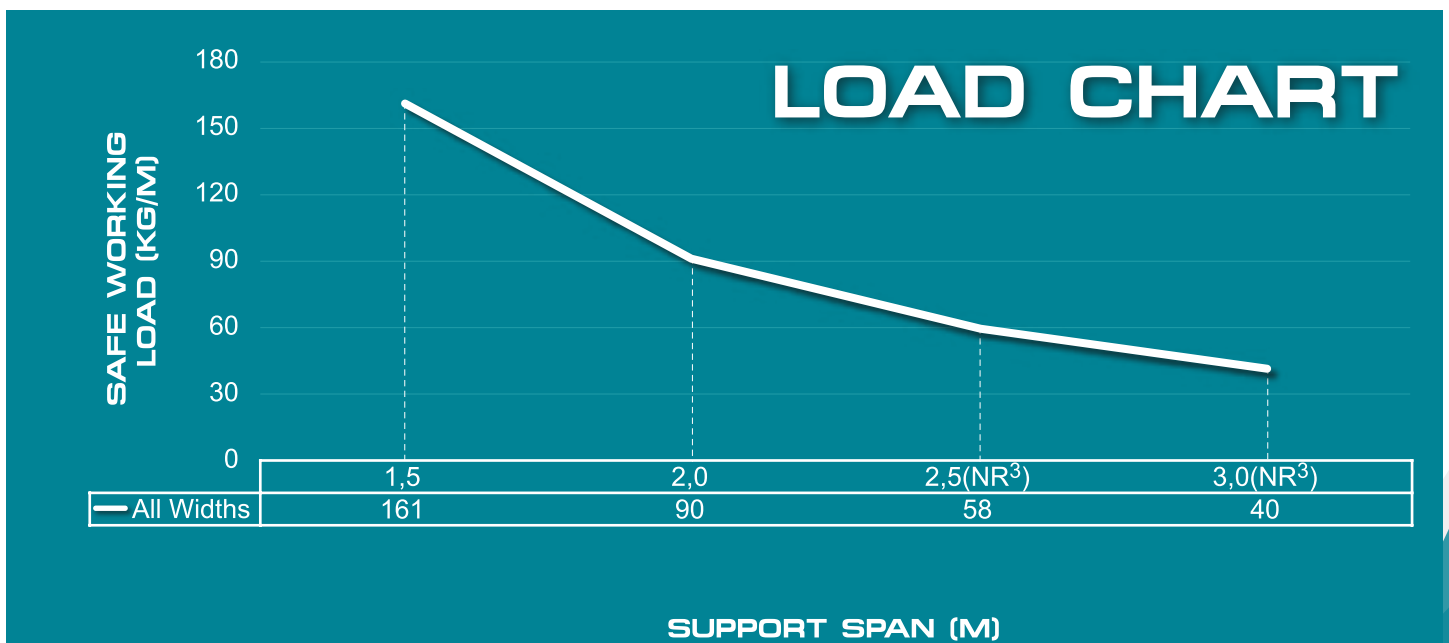
SPECIFICATIONS

| | |
|-----------------------|--|
| Application | Horizontally & Vertically Mounted installation |
| Material ¹ | Pre-Galvanized Steel |
| Thickness | 1.2mm [75-300 wide] 1.6mm [450-900 wide] |
| Side Height | 50mm |
| Standard Length | 3.0m |
| Available Width | 75 100 150 225 300 450 600 750 900mm |
| Available Accessories | Hor Int Ext Tee 4-Way Covers |

¹ Mild Steel [Hot Dip Galvanized] – External Lip
- available on request

The data below is typical, based on results under test conditions & should be used as a guide only.

³This support span is not recommended.



Cable Tray Accessories



Internal
Bend



Horizontal
Bend



External
Bend



4-Way

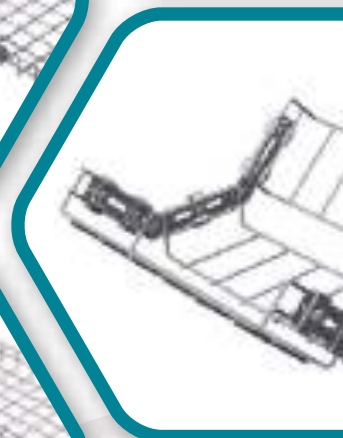
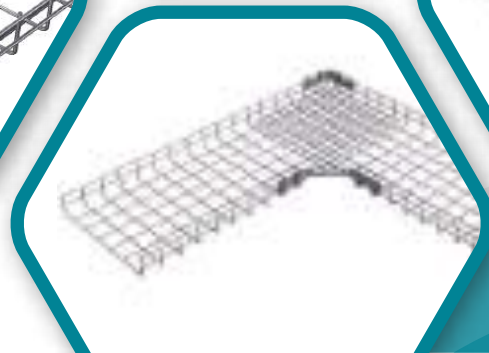
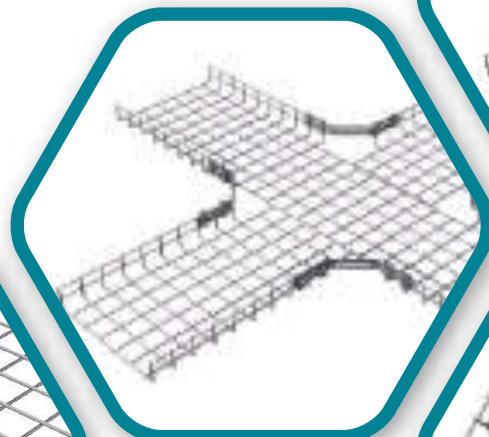
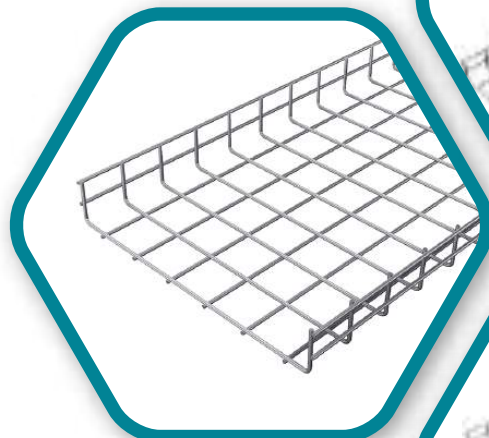
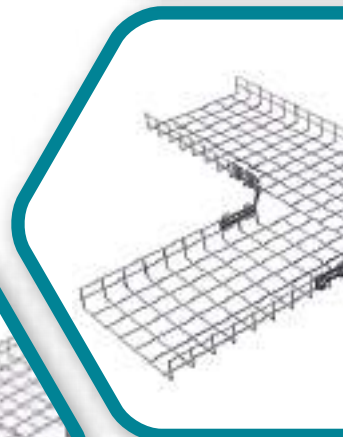


Tee

Wire Mesh Trays

Wire Mesh Trays are manufactured from steel wire, welded into a mesh type construction, forming a U-shape channel type support allowing for a maximum-ventilated installation with minimal dust or residue collection.

Our Wire Mesh Tray and Accessory range allow for easy installation on site with economical solutions for medium duty and heavy duty horizontal or vertical mount applications.





WM50

Wire Mesh Tray

SPECIFICATIONS

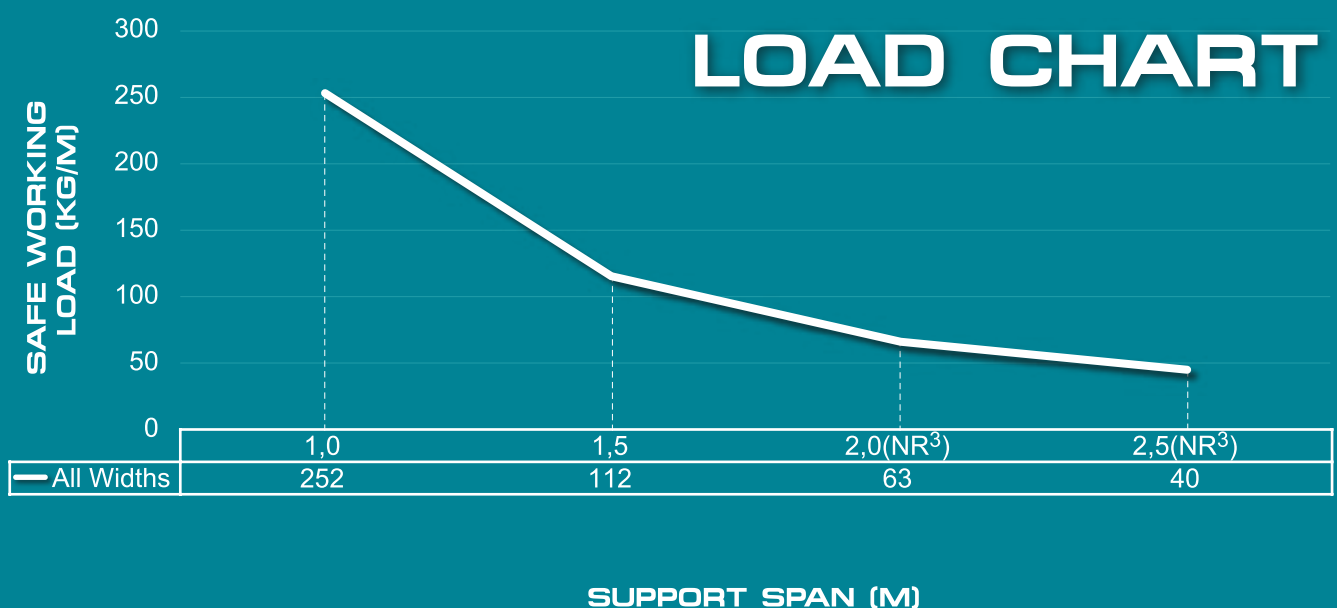
| | |
|-----------------------|--|
| Application | Horizontally & Vertically Mounted installation |
| Material ¹ | Mild Steel [Electro Galvanized] |
| Wire Diameter | 4.0mm |
| Side Height | 50mm |
| Standard Length | 3.0m |
| Aperture | 50 x 50mm [WM50] 50 x 100mm [WM50/1] |
| Available Width | 50 100 150 200 300 400 500 600mm |
| Available Accessories | Hor Brackets Vert Brackets Hanger Brackets |

¹ Stainless Steel 304 & 316 - available on request

The data below is typical, based on results under test conditions & should be used as a guide only.

³This support span is not recommended.

LOAD CHART





WM75

Wire Mesh Tray

SPECIFICATIONS

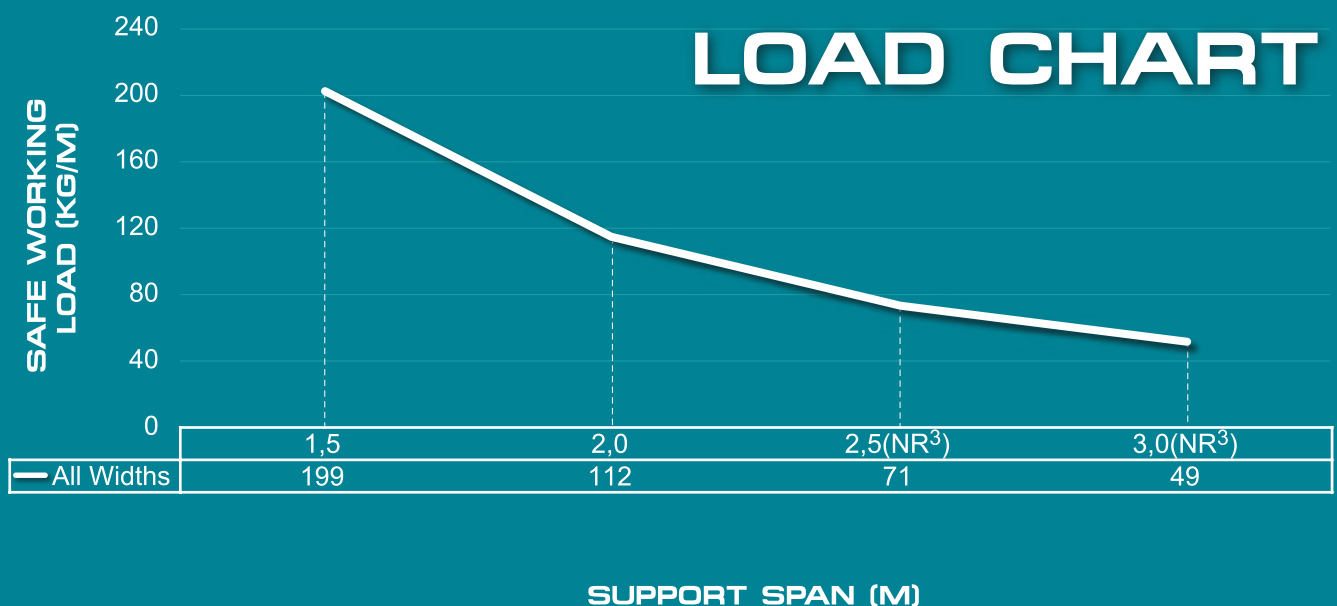
| | |
|-----------------------|--|
| Application | Horizontally & Vertically Mounted installation |
| Material ¹ | Mild Steel [Electro Galvanized] |
| Wire Diameter | 5.0mm |
| Side Height | 75mm |
| Standard Length | 3.0m |
| Aperture | 50 x 50mm [WM75] 50 x 100mm [WM75/1] |
| Available Width | 100 150 200 300 400 500 600 800 1000mm |
| Available Accessories | Hor Brackets Vert Brackets Hanger Brackets |

¹ Stainless Steel 304 & 316 - available on request

The data below is typical, based on results under test conditions & should be used as a guide only.

³This support span is not recommended.

LOAD CHART



Wire Mesh Tray Accessories

Internal
Bend



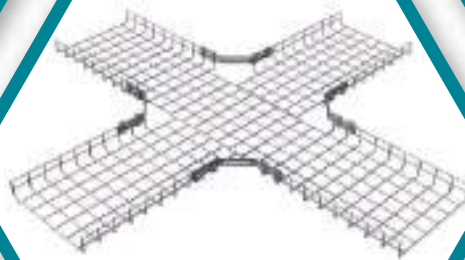
Horizontal
Bend



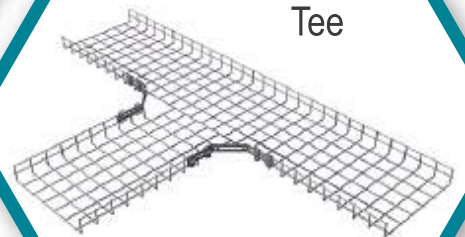
External
Bend



4-Way



Tee



Cable Trunking

Cable Trunking is manufactured from sheet metal or PVC, forming a U-shape channel type duct allowing for a neatly reticulated installation.

Our Cable Trunking and Accessory range allow for easy installation on site with economical solutions for a variety of applications.





ST 1000

Channel

SPECIFICATIONS

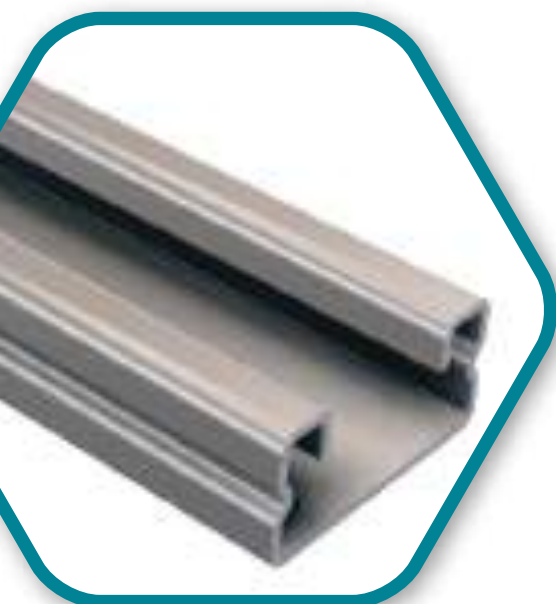
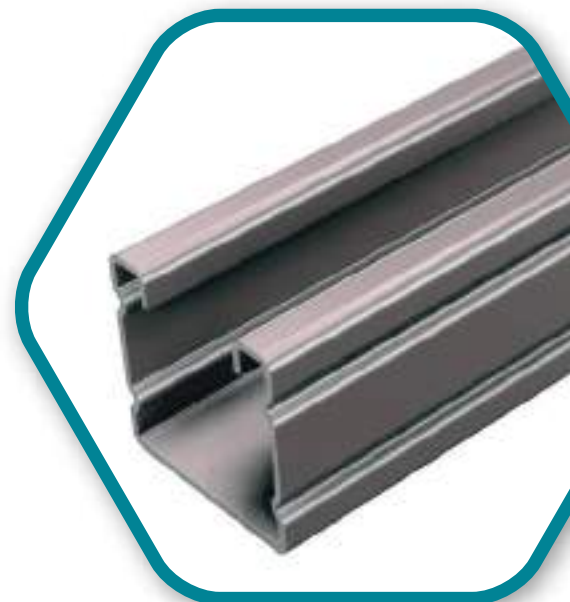
| | |
|-----------------------|--|
| Material | Pre-Galvanized Steel |
| Thickness | 2.5mm |
| Height | 41mm |
| Width | 41mm |
| Standard Length | 5.0m |
| Covers | ST1184 PG [2.5m] ST1184 PVC [2.5m] |
| Available Accessories | Hor Int Ext Tee 4-Way End Cap Hanger |

ST2000

Channel

SPECIFICATIONS

| | |
|-----------------------|--|
| Material | Pre-Galvanized Steel |
| Thickness | 1.0mm 1.6mm |
| Height | 41mm |
| Width | 41mm |
| Standard Length | 5.0m |
| Covers | ST1184 PG [2.5m] ST1184 PVC [2.5m] |
| Available Accessories | Hor Int Ext Tee 4-Way End Cap Hanger |

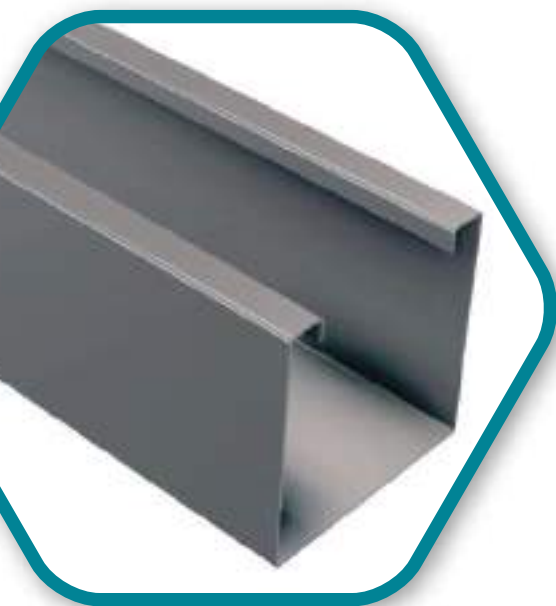


ST 4000

Channel

SPECIFICATIONS

| | |
|-----------------------|--|
| Material | Pre-Galvanized Steel |
| Thickness | 1.6mm |
| Height | 21mm |
| Width | 41mm |
| Standard Length | 5.0m |
| Covers | ST1184 PG [2.5m] ST1184 PVC [2.5m] |
| Available Accessories | Hor Int Ext Tee 4-Way End Cap Hanger |



ST8000

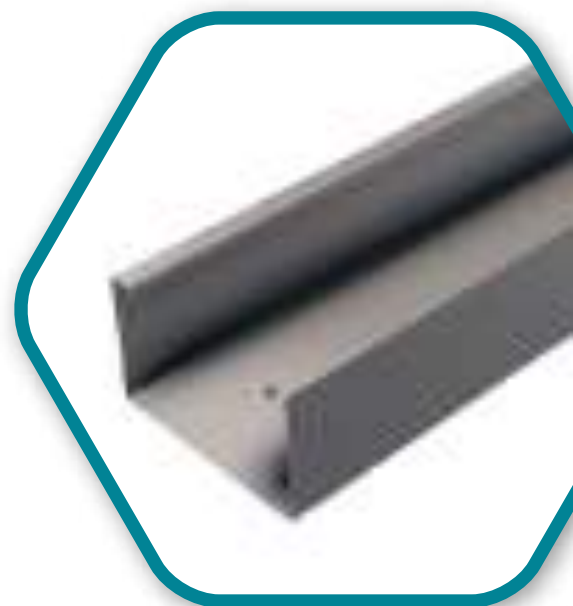
Channel

| SPECIFICATIONS | |
|-----------------------|--|
| Material | Pre-Galvanized Steel |
| Thickness | 0.8mm |
| Height | 76mm |
| Width | 76mm |
| Standard Length | 3.0m |
| Covers | ST8184 PG [3.0m] ST8184 pvc [3.0m] |
| Available Accessories | Hor Int Ext Tee 4-Way Hanger |

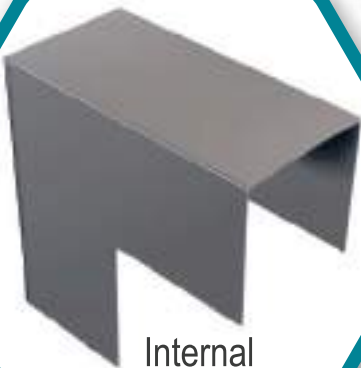
ST9000

Channel

| SPECIFICATIONS | |
|-----------------------|--|
| Material | Pre-Galvanized Steel |
| Thickness | 0.8mm |
| Height | 76mm |
| Width | 127mm |
| Standard Length | 3.0m |
| Covers | ST9184 PG [3.0m] ST9184 PVC [3.0m] |
| Available Accessories | Hor Int Ext Tee 4-Way Hanger |



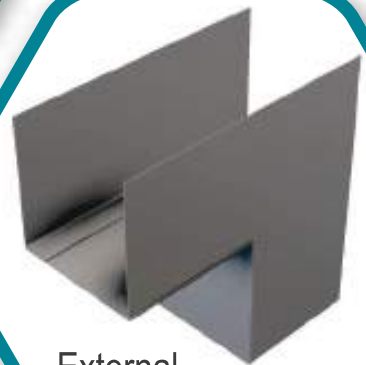
Cable Trunking Accessories



Internal
Elbow



Horizontal
Elbow



External
Elbow



4-Way

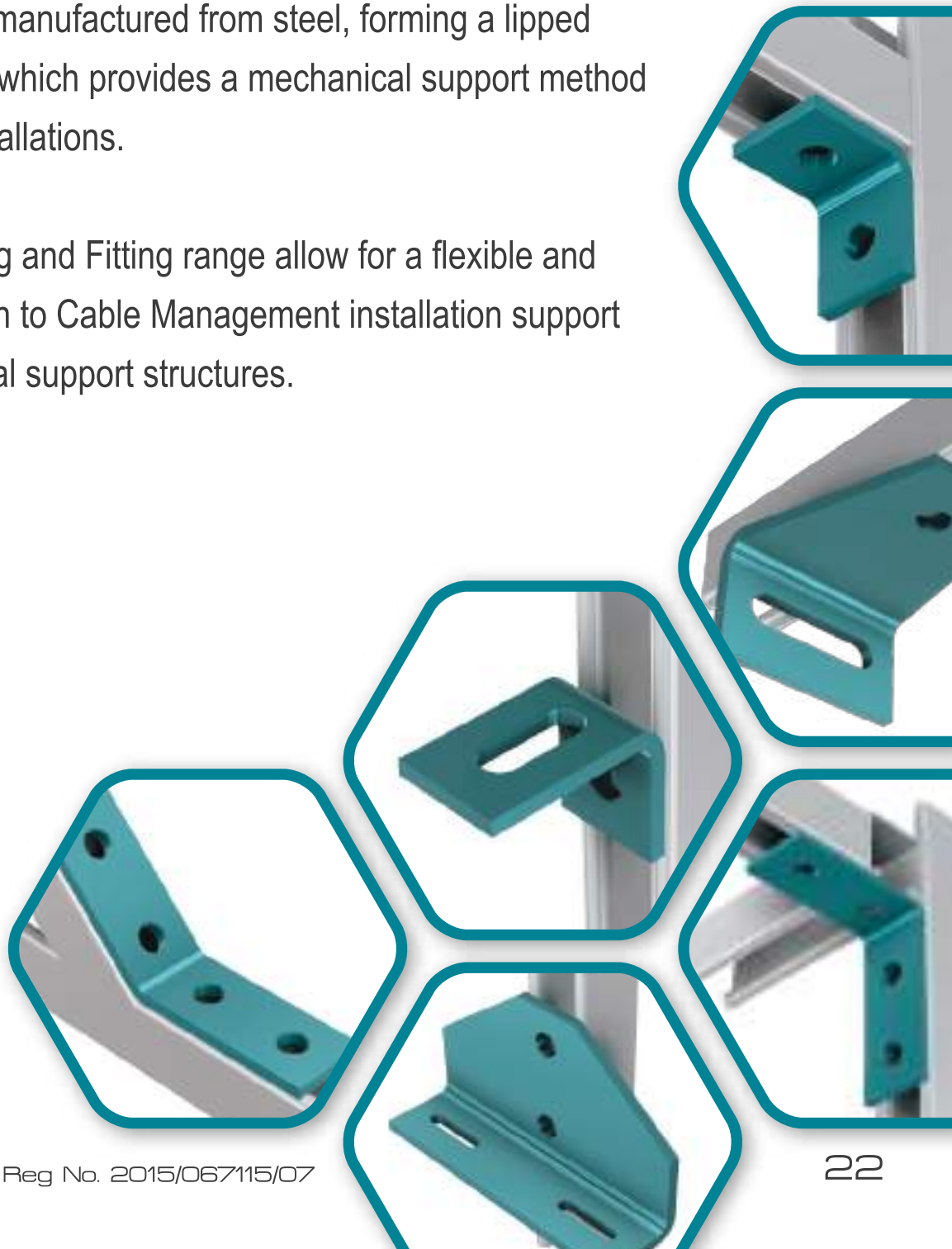


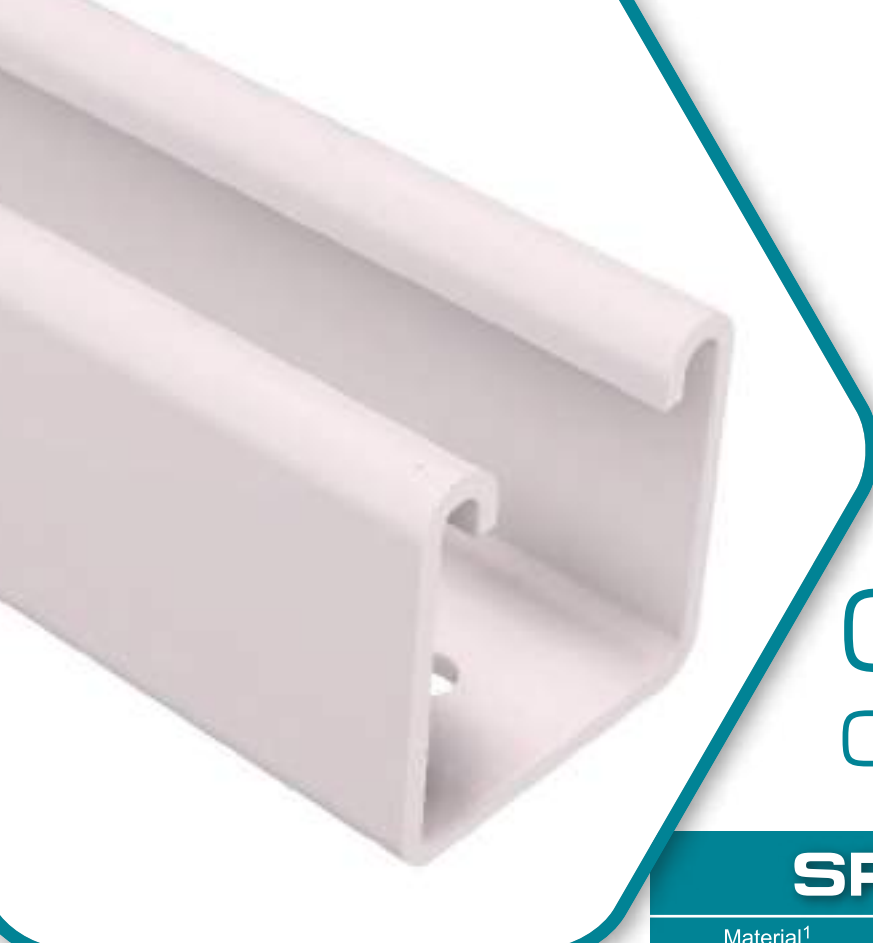
Tee

Metal Framing

Metal Framing is manufactured from steel, forming a lipped U-shape channel which provides a mechanical support method to a variety of installations.

Our Metal Framing and Fitting range allow for a flexible and adjustable solution to Cable Management installation support systems or general support structures.





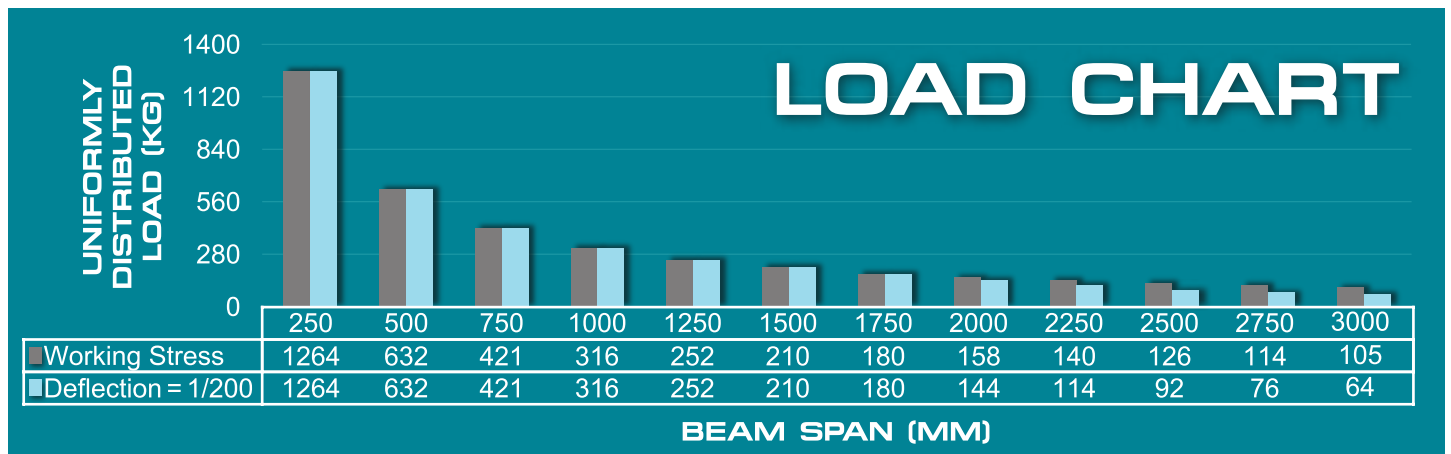
C 1000 Channel

SPECIFICATIONS

| | |
|-----------------------|---------------------------------|
| Material ¹ | Mild Steel [Hot Dip Galvanized] |
| Thickness | 2.5mm |
| Height | 41mm |
| Width | 41mm |
| Standard Length | 6.0m |
| Weight | 2.6kg/m |

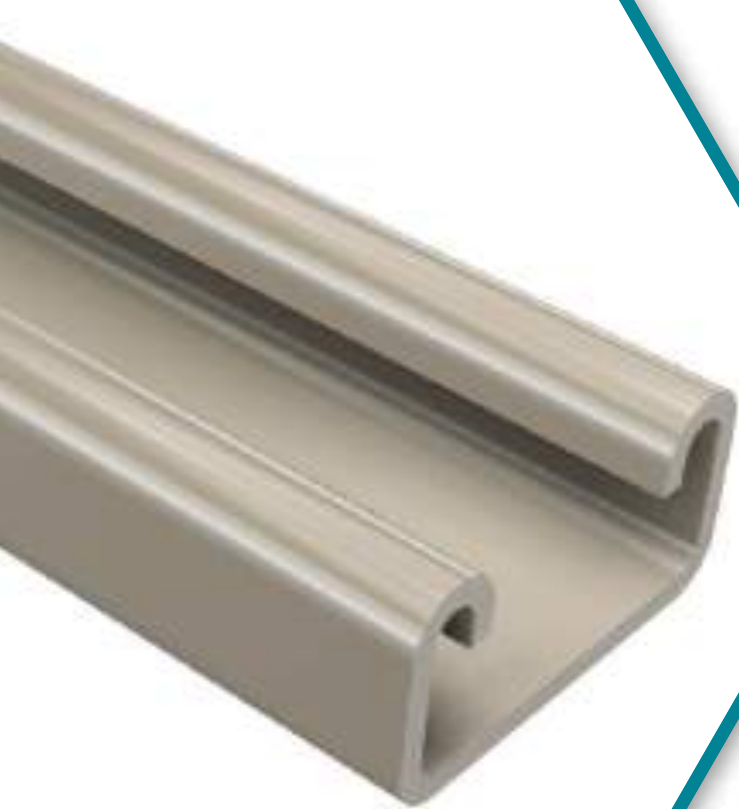
¹ Stainless Steel 304 & 316 - available on request

The data below is typical, based on results under test conditions & should be used as a guide only. For a load that is concentrated at the centre of the span, the value on the Load Chart should be halved.



LOAD TABLE

| Column Unsupported Height (mm) | 250 | 500 | 750 | 1000 | 1250 | 1500 | 1750 | 2000 | 2250 | 2500 | 2750 | 3000 |
|---|------|------|------|------|------|------|------|------|------|------|------|------|
| Maximum Column Load - UDL (kg) | 4268 | 4105 | 3755 | 3131 | 2467 | 1970 | 1620 | 1365 | 1172 | 1021 | - | - |
| Column Load at Channel Opening - UDL (kg) | 1216 | 1202 | 1170 | 1102 | 1006 | 912 | 829 | 757 | 694 | 638 | - | - |

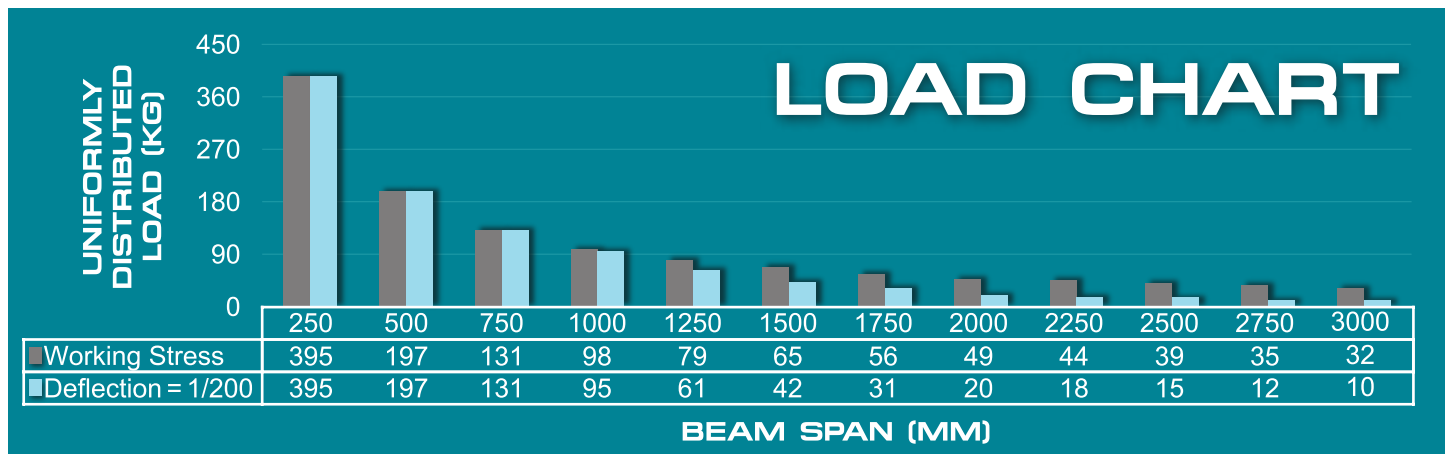


C3300 Channel

SPECIFICATIONS

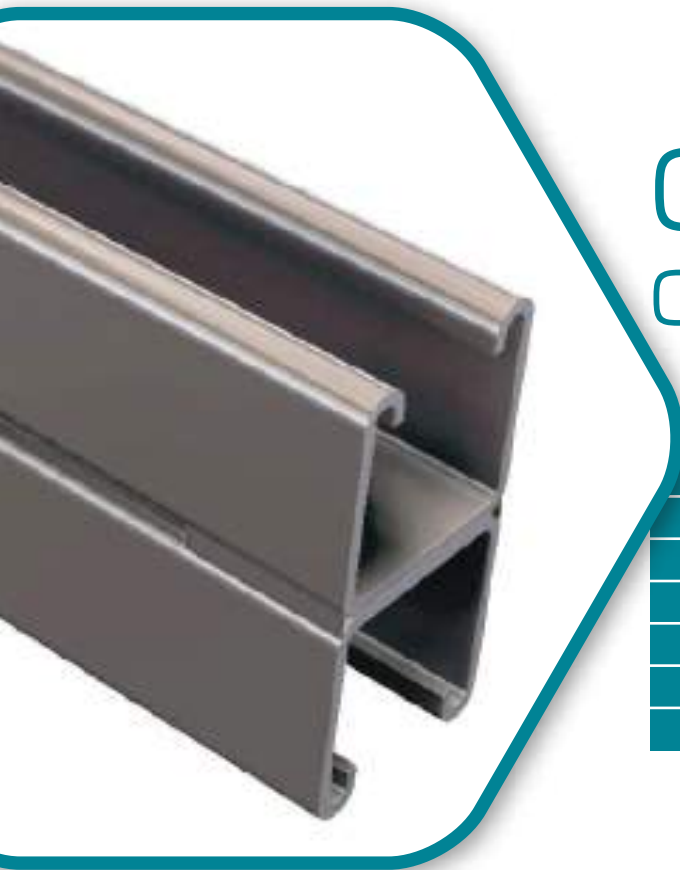
| | |
|-----------------|---------------------------------|
| Material | Mild Steel [Hot Dip Galvanized] |
| Thickness | 2.5mm |
| Height | 21mm |
| Width | 41mm |
| Standard Length | 6.0m |
| Weight | 1.8kg/m |

The data below is typical, based on results under test conditions & should be used as a guide only. For a load that is concentrated at the centre of the span, the value on the Load Chart should be halved.



LOAD TABLE

| Column Unsupported Height (mm) | 250 | 500 | 750 | 1000 | 1250 | 1500 | 1750 | 2000 | 2250 | 2500 | 2750 | 3000 |
|---|------|------|------|------|------|------|------|------|------|------|------|------|
| Maximum Column Load - UDL (kg) | 2857 | 2523 | 1894 | 1258 | 856 | - | - | - | - | - | - | - |
| Column Load at Channel Opening - UDL (kg) | 745 | 720 | 657 | 559 | 463 | - | - | - | - | - | - | - |



C 1001

Channel

SPECIFICATIONS

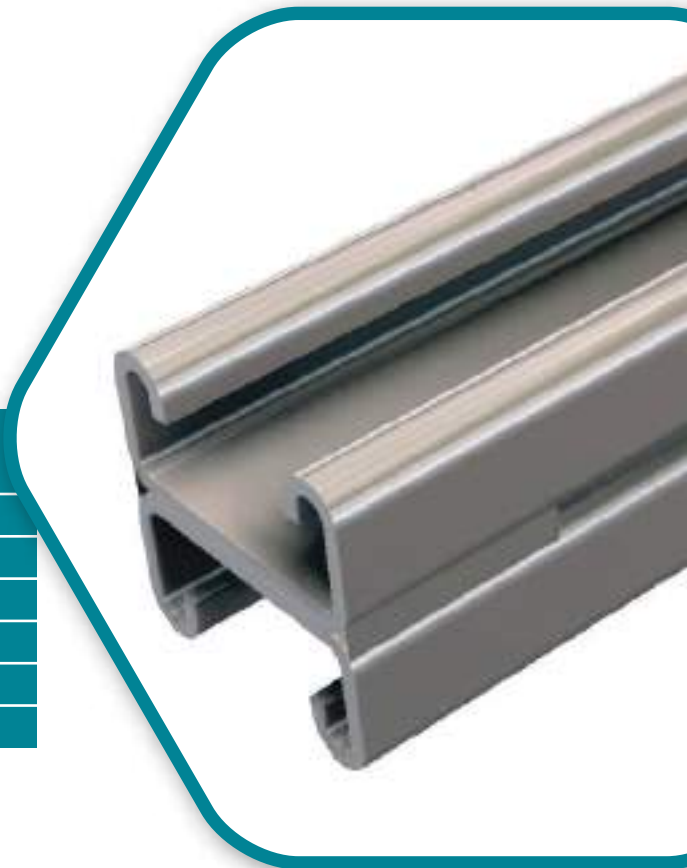
| Material | Mild Steel [Hot Dip Galvanized] |
|-----------------|---------------------------------|
| Thickness | 2.5mm |
| Height | 82mm |
| Width | 41mm |
| Standard Length | 6.0m |
| Weight | 5.2kg/m |

C3301

Channel

SPECIFICATIONS

| Material | Mild Steel [Hot Dip Galvanized] |
|-----------------|---------------------------------|
| Thickness | 2.5mm |
| Height | 21mm |
| Width | 41mm |
| Standard Length | 6.0m |
| Weight | 1.8kg/m |





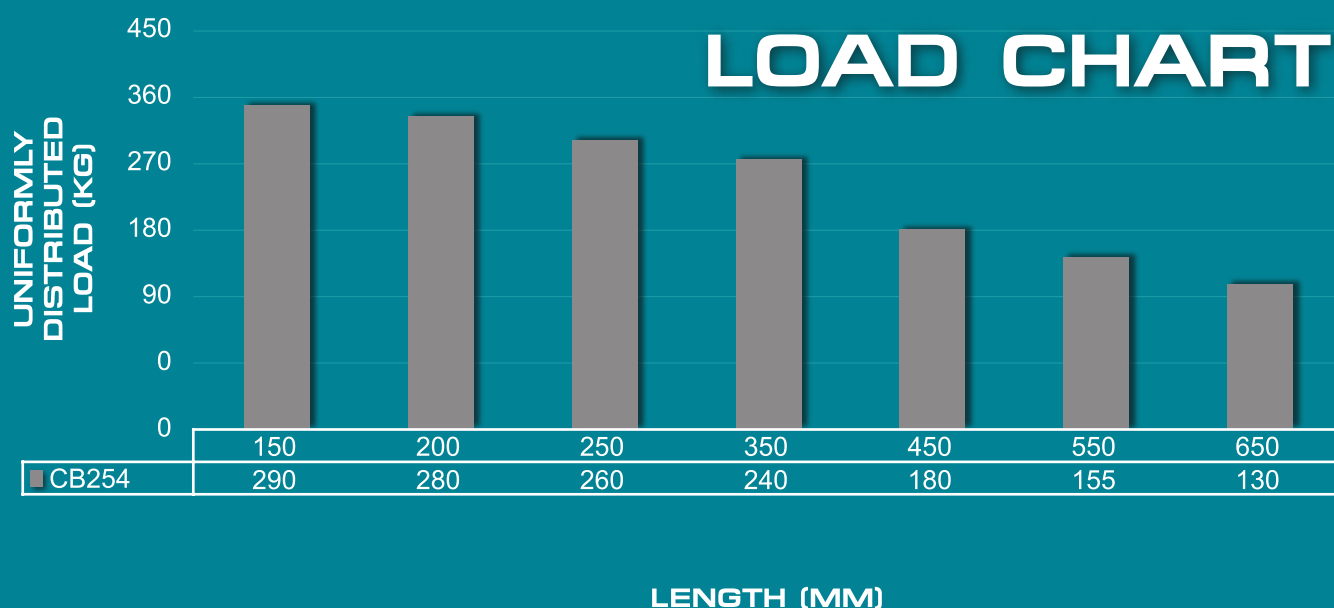
CB254

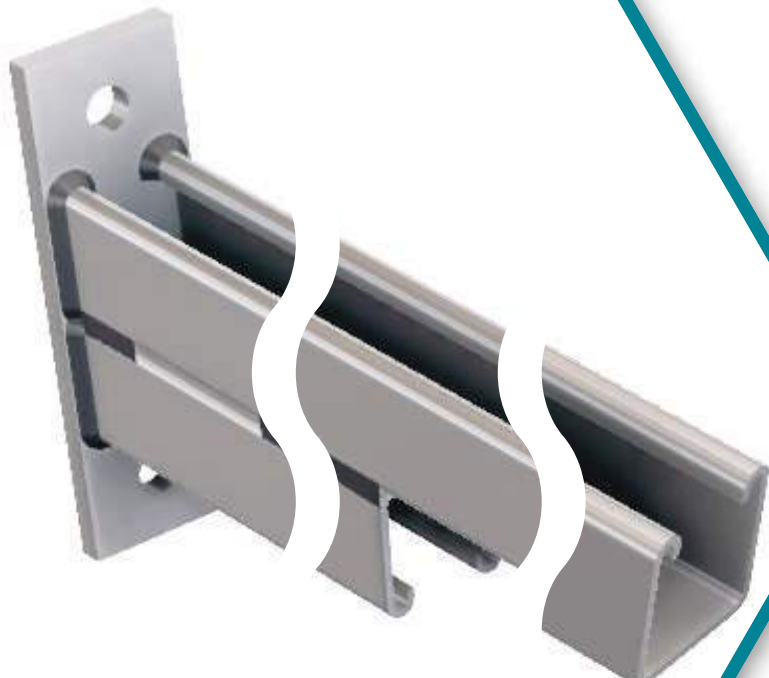
Cantilever Bracket

SPECIFICATIONS

| | |
|-------------------|---|
| Material | Mild Steel [Hot Dip Galvanized] |
| Back Plate | Flat |
| Fixing Holes | 14mm |
| Type | Single Channel |
| Channel | C1000 [2.5mm] |
| Available Lengths | 150 200 250 350 450 550 650mm |

The data below is typical, based on results under test conditions & should be used as a guide only.





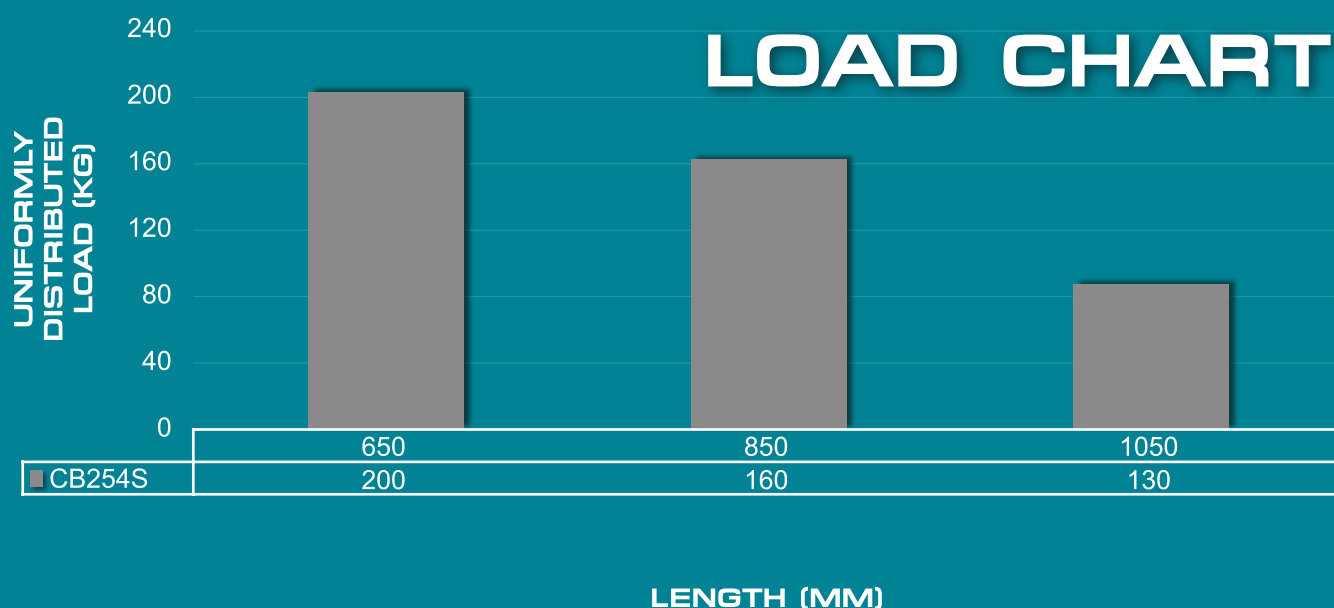
CB254S

Cantilever Bracket

SPECIFICATIONS

| | |
|-------------------|---------------------------------|
| Material | Mild Steel [Hot Dip Galvanized] |
| Back Plate | Flat |
| Fixing Holes | 14mm |
| Type | Staggered Channel |
| Channel | C1000 [2.5mm] |
| Available Lengths | 650 850 1050mm |

The data below is typical, based on results under test conditions & should be used as a guide only.





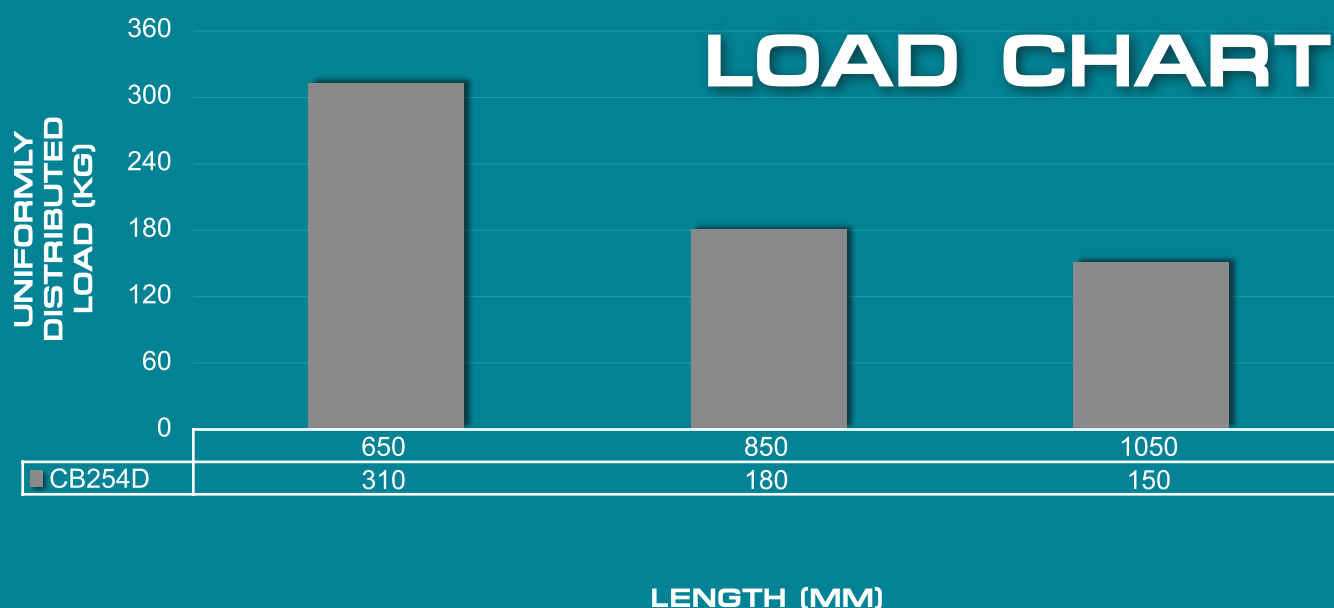
CB254D

Cantilever Bracket

SPECIFICATIONS

| | |
|-------------------|---------------------------------|
| Material | Mild Steel [Hot Dip Galvanized] |
| Back Plate | Flat |
| Fixing Holes | 14mm |
| Type | Double Channel |
| Channel | C1000 [2.5mm] |
| Available Lengths | 650 850 1050mm |

The data below is typical, based on results under test conditions & should be used as a guide only.





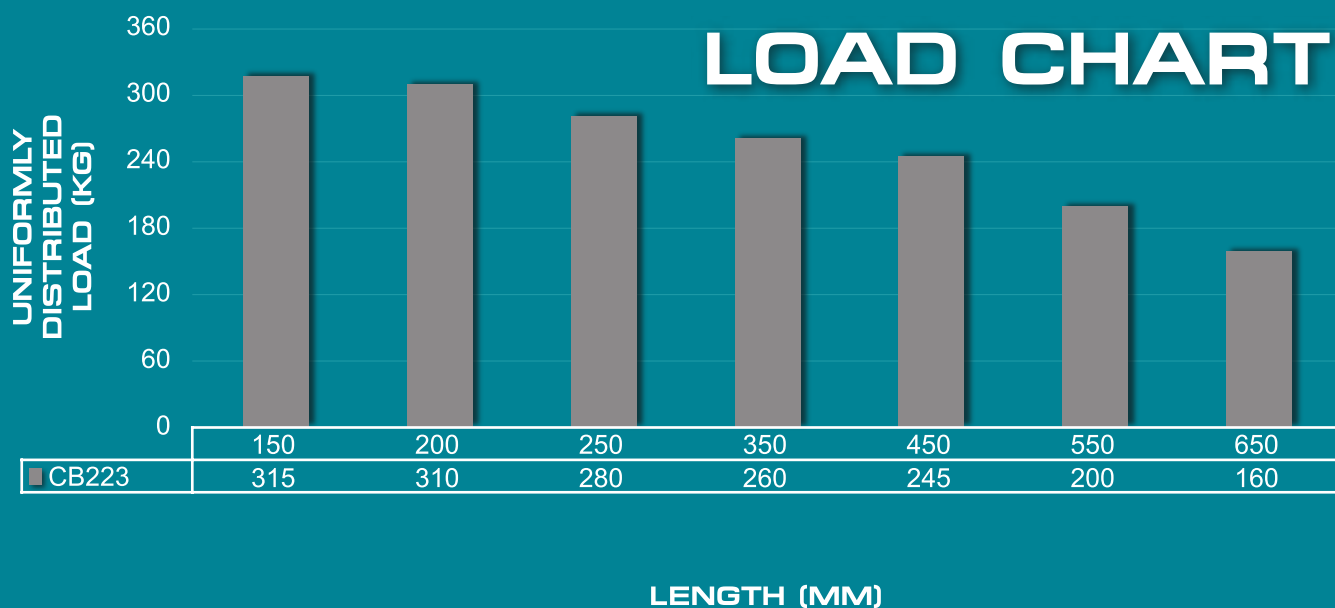
CB223

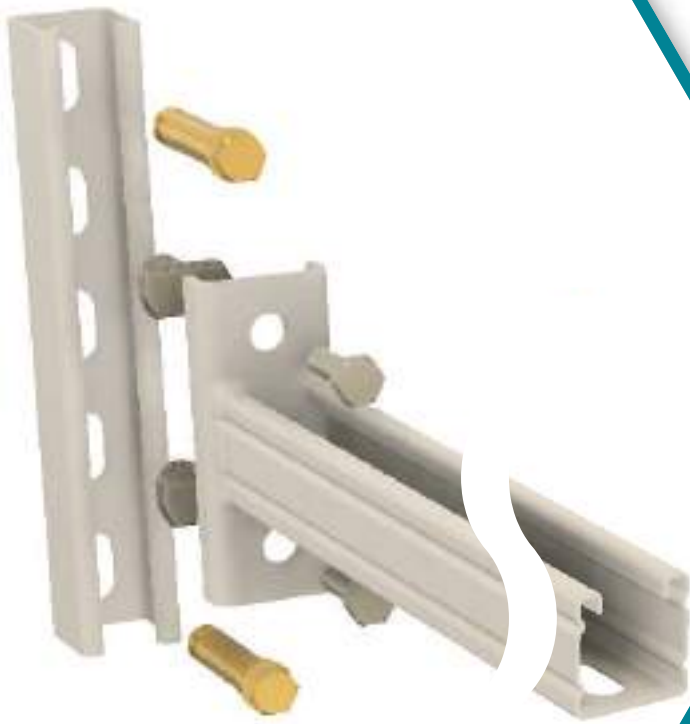
Cantilever Bracket

SPECIFICATIONS

| | |
|-------------------|---|
| Material | Mild Steel [Hot Dip Galvanized] |
| Back Plate | Wrap Around |
| Fixing Holes | 14mm |
| Type | Single Channel |
| Channel | C1000 [2.5mm] |
| Available Lengths | 150 200 250 350 450 550 650mm |

The data below is typical, based on results under test conditions & should be used as a guide only.





CB223

Air-Con Mounting Kit

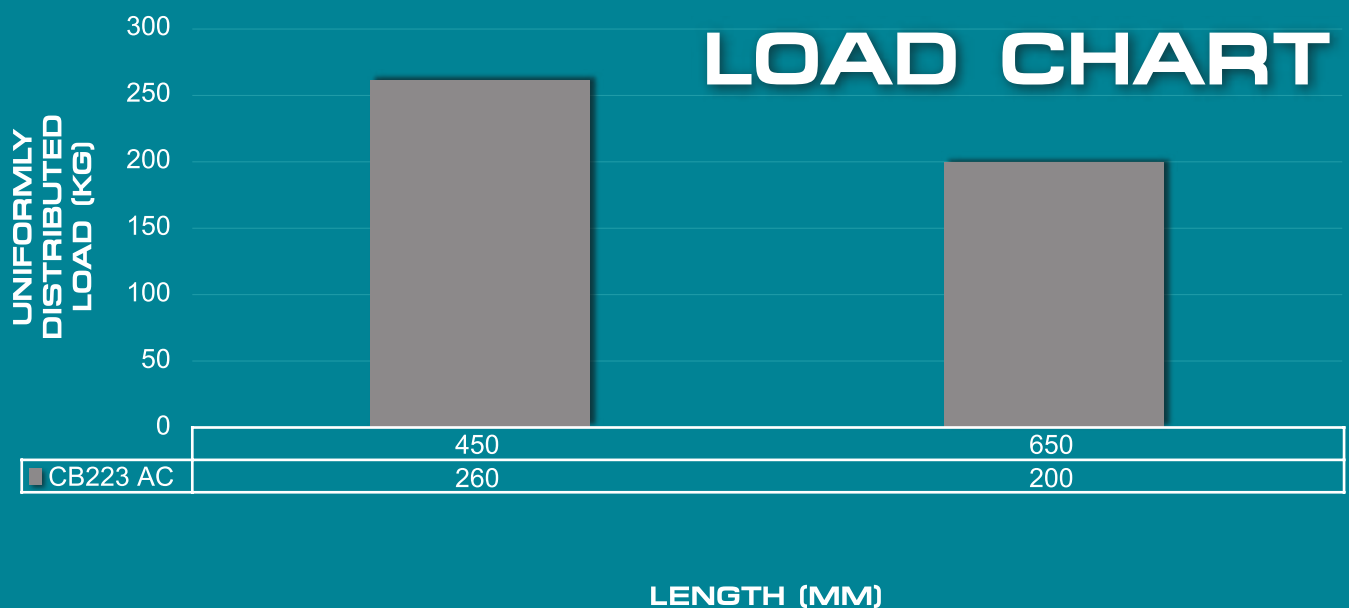
SPECIFICATIONS

| | |
|-------------------|---------------------------------|
| Material | Mild Steel [Hot Dip Galvanized] |
| Back Plate | Wrap Around |
| Fixing Holes | 14mm |
| Type | Single Channel |
| Channel | C2000 Slotted [1.6mm] |
| Available Lengths | 450 650mm |
| Available Colours | White Grey |

This Kit Includes:

- 2x Cantilever Brackets
- 2x Mounting Brackets
- 4x Shield Anchors
- 8x Hex Bolts
- 4x Spring Nuts
- 4x Hex Nuts
- 4x Flat Washers

The data below is typical, based on results under test conditions & should be used as a guide only.



Fittings Installation

SPECIFICATIONS

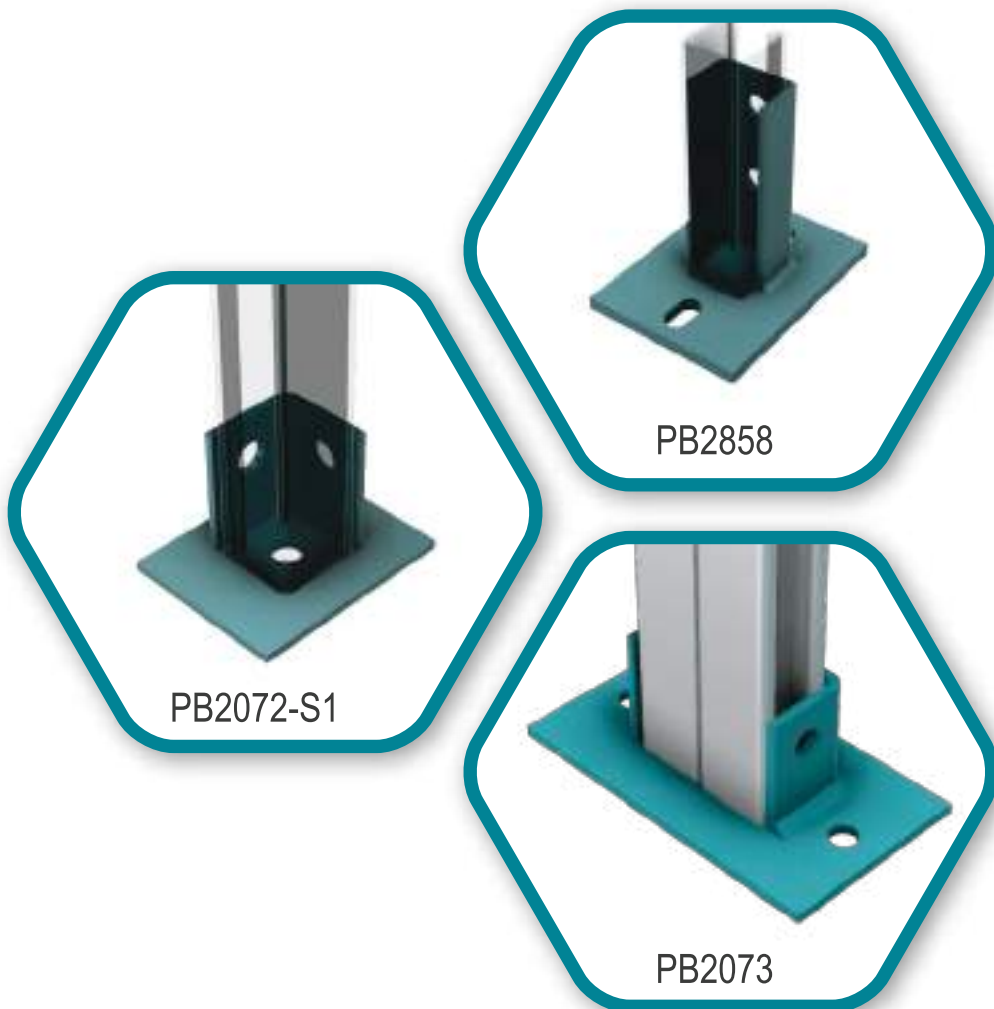
| | |
|-----------------------|--|
| Material | Mild Steel [Hot Dip Galvanized] |
| Thickness | 6mm [Unless Otherwise Stated] |
| Width | 40mm [Unless Otherwise Stated] |
| Hole Size | 14mm |
| Hole Spacing | 20.5mm From End |
| Hole Centres | 48mm |
| Fastner Grade | 4.8 [Unhardened Spring Nut] 8.8 Hardened Spring Nut] |
| Max Tightening Torque | 50Nm |
| Pull Out Strength | 350kg [C1000] 250kg [C3300] |
| Slip Resistance | 180kg |

The data is typical, based on results under test conditions & should be used as a guide only.



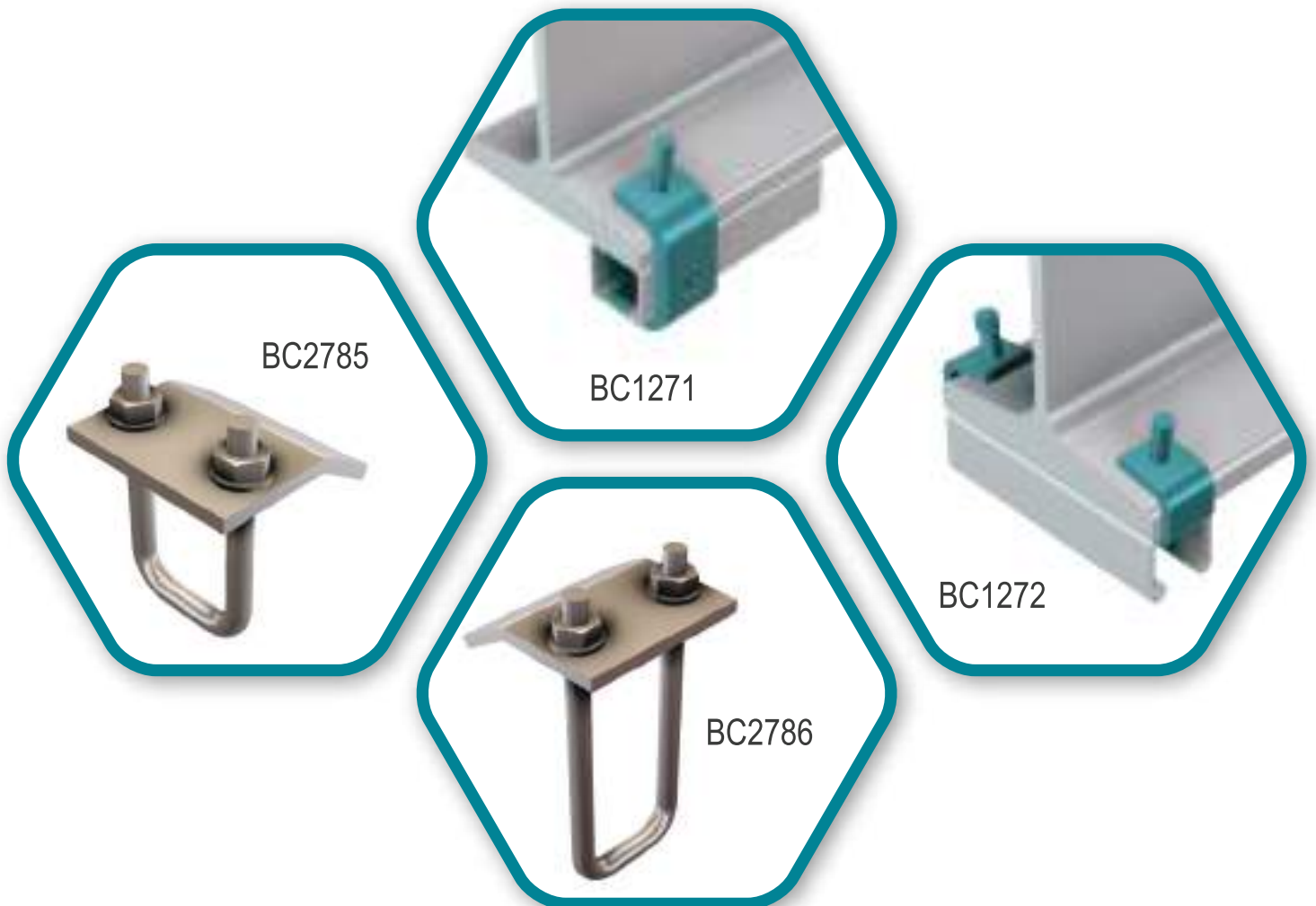
Metal Framing

Post Bases



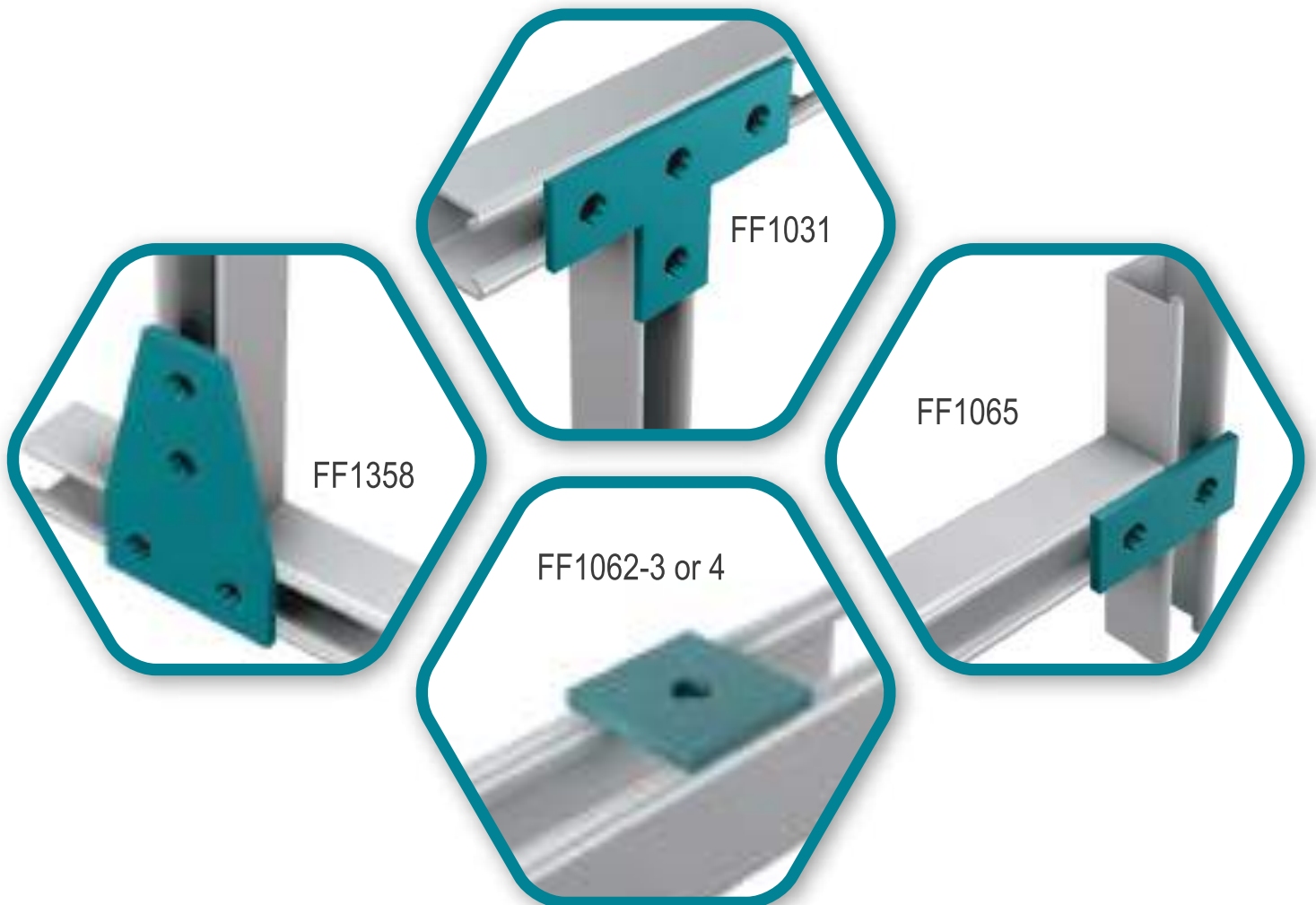
Metal Framing

Beam Clamps



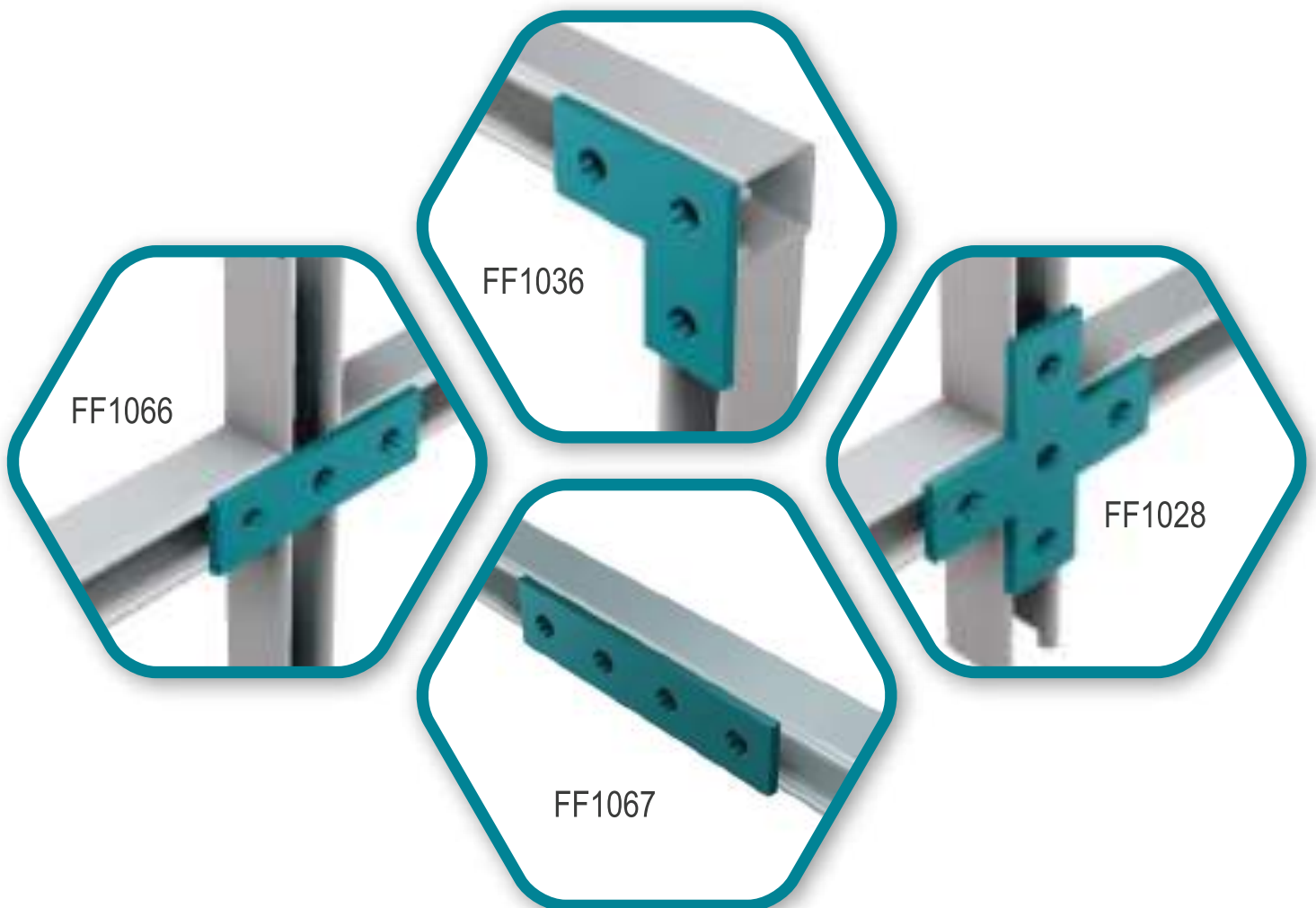
Metal Framing

Flat Fittings



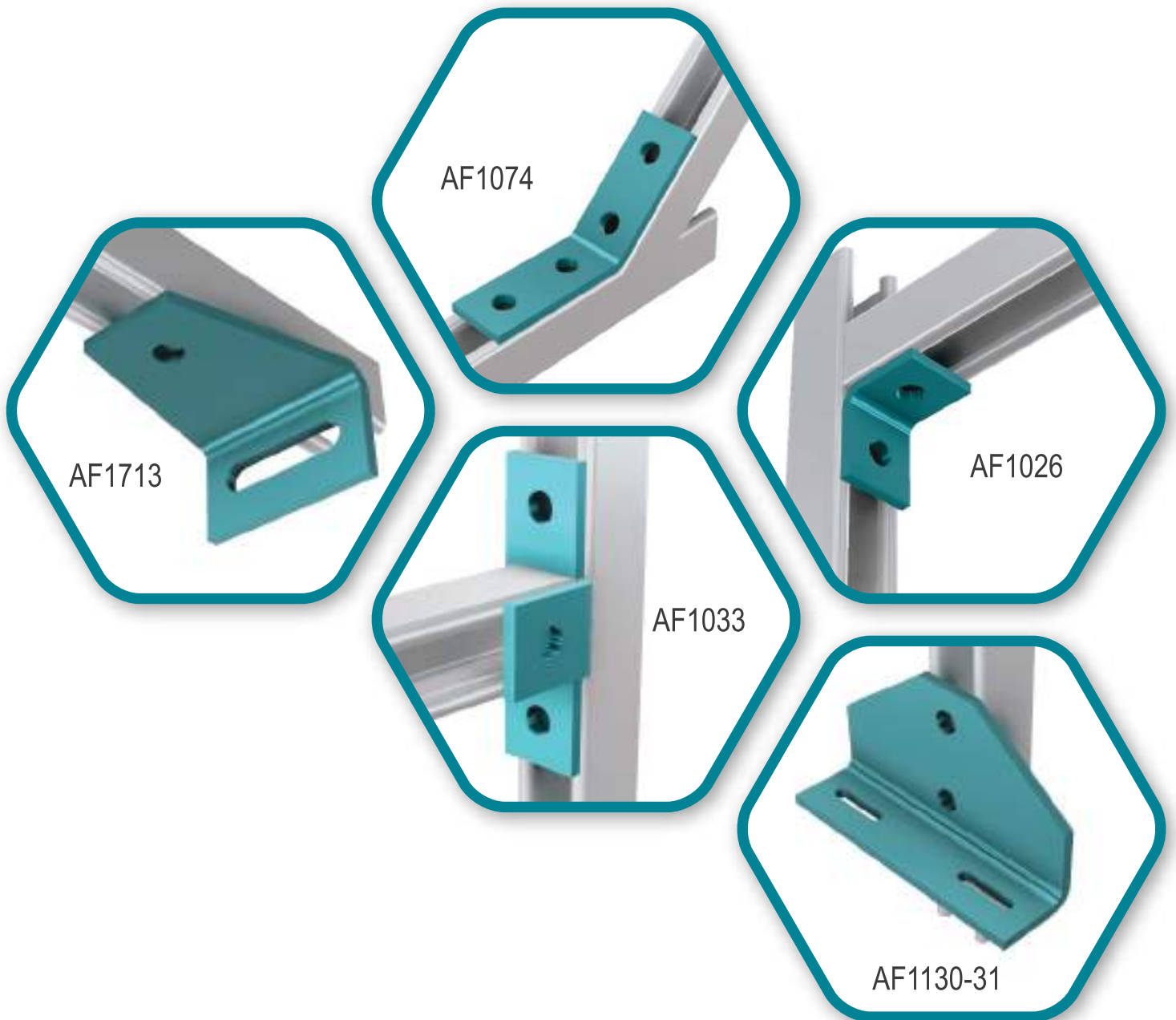
Metal Framing

Flat Fittings - continued



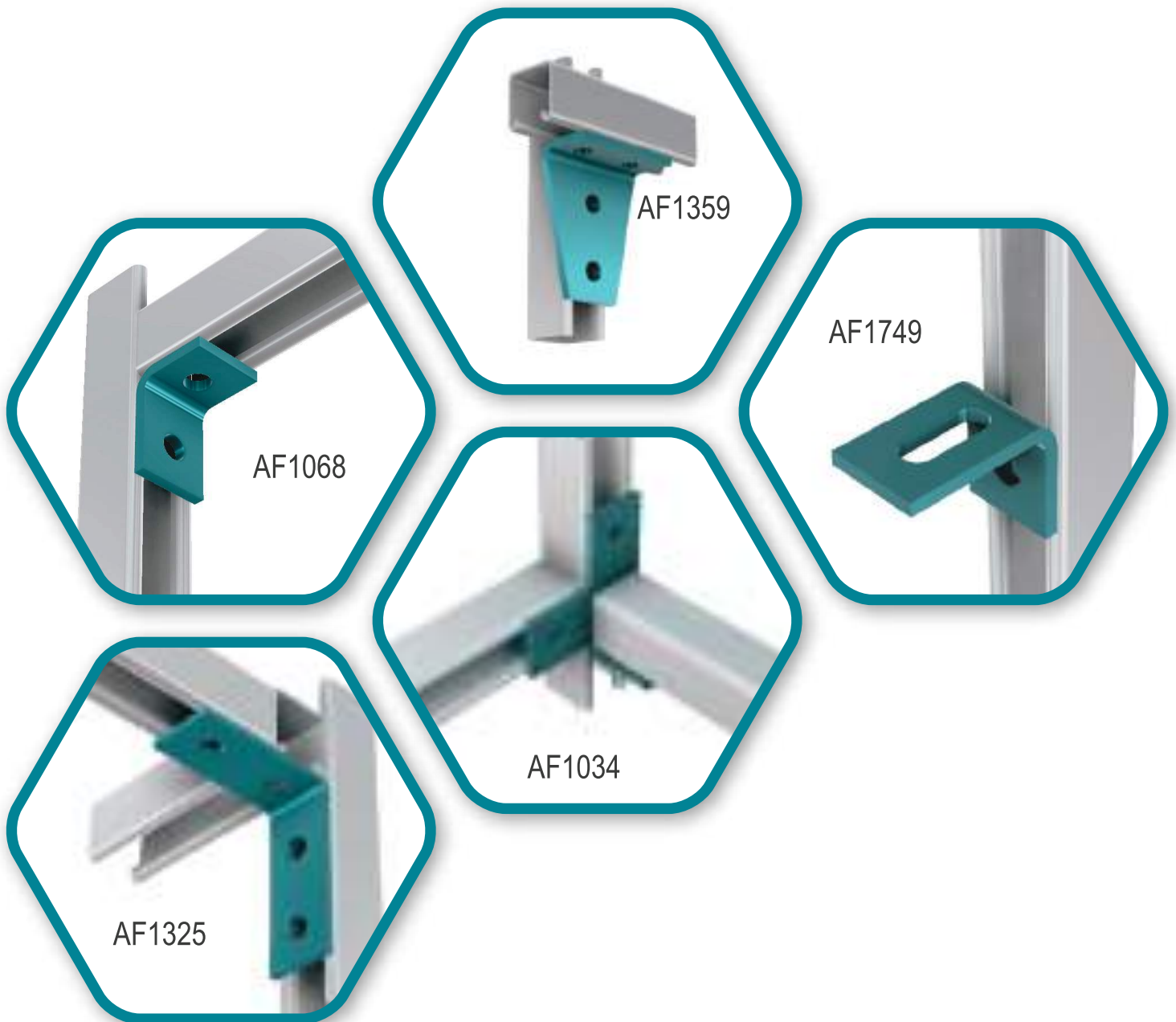
Metal Framing

Angular Fittings



Metal Framing

Angular Fittings - continued



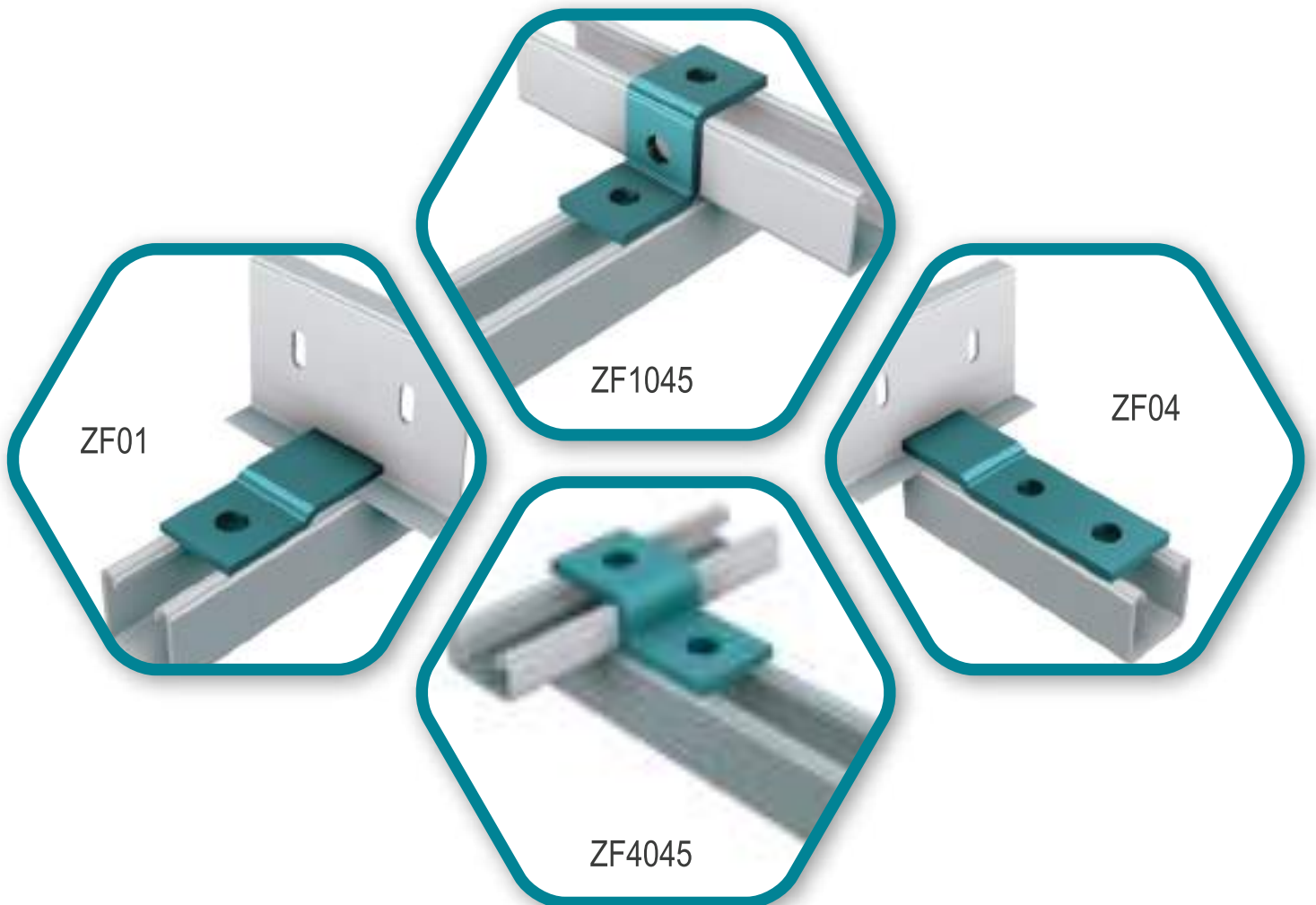
Metal Framing

Angular Fittings - continued



Metal Framing

Z-Fittings



Metal Framing

U-Fittings

UF1047

UF4377

UF2346

UF1737

UF4047

UF1377

✉ info@petrostrut.com

Unit 8 Celtis Business
Park, 43 Martingale Rd,
Stormill Ext 5

☎ 010 065 4747